

What is parental care?

- The rearing of a child or children especially the care, love and guidance given by parent.
- Also we can say that parental care is a form of altruism since this type of behaviour involves increasing the fitness of offspring at the expense of parents.

TYPES OF VARIATION IN PARENTAL CARE

- PARENTAL
- MATERNAL
- BIPARENTAL

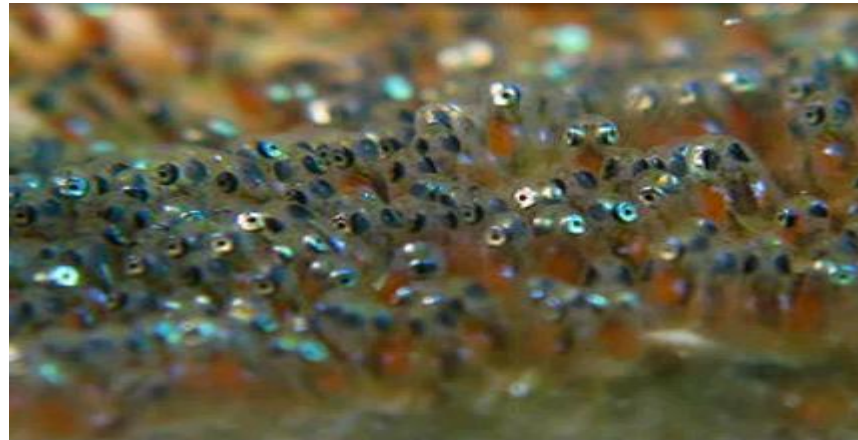
DISTRIBUTION OF PARENTAL CARE IN FISHES

❖ 77% = SHOWS NO PARENTAL CARE

❖ 17% = CARE FOR EGG ONLY

❖ 6% = CARE FOR EGG & NEWLY
HATCHED YOUNG

MEANS OF PARENTAL CARE IN FISHES



SCATTERING EGGS IN STICKY COVERING :
EXAMPLE : *Perca flavescens*

SCATTERING EGGS OVER AQUATIC PLANTS



EXAMPLE : *Cyprinus carpio*

NEST BUILDING



EXAMPLE : SUNFISHES

GUARDING OF NEST



EXAMPLE : MALE *Amia calva* GUARDING ITS
CIRCULAR NEST

NEST OF TEN SPINED STICKLEBACK



STICKLEBACK BUILDS A NEST BY COLLECTING
PLANT FRAGMENTS, ROOTLETS & THEN BIND THEM
WITH ADHESIVE KIDNEY SECRETION

FLOATING NEST



MALE Siamese fighting fish BUILDS A FLOATING NEST & STICK THE FERTILISED EGG TO LOWER SURFACE OF FOAMY NEST

DEPOSITION OF EGGS BY OVIPOSITOR IN MUSSELS



FEMALE Rhodeus DEPOSIT EGGS IN SIPHON OF FRESH WATER MUSSEL

EGG BROODING IN MOUTH



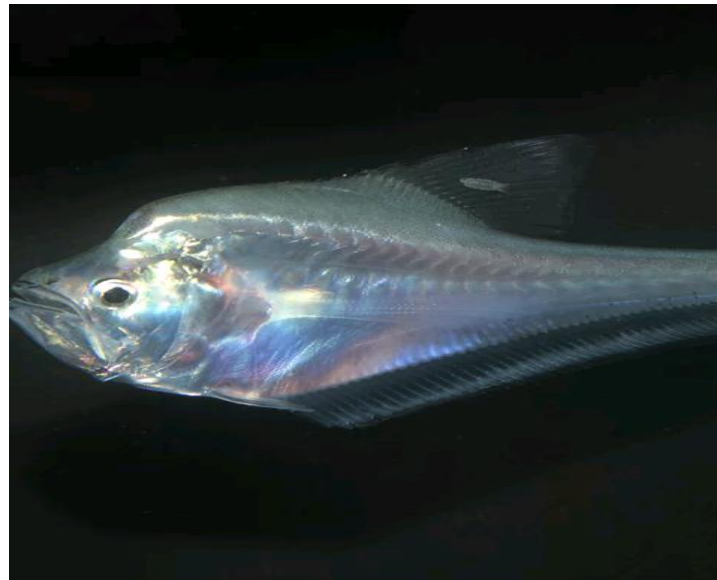
FEMALE Tilapia BROODS FERTILIZED
EGGS IN HER MOUTH

BROOD POUCHES



IN MALE Hippocampus FERTILISED EGGS ARE TRANSFERRED BY FEMALE INTO BROOD POUCH ON THE BELLY OF MALE.

ATTACHMENT OF EGG TO BODY



MALE *Curtus* CARRIES EGGS HELD IN
CEPHALIC HOOK

BROOD POUCH



IN MALE *Syngnathus* A BROOD POUCH IS FORMED BY TWO FLAPS OF SKIN ON UNDERSIDE OF BODY ON WHICH EGGS ARE PLACED BY FEMALE

EGG CAPSULE



IN ELASMOBRANCHS FERTILIZED EGGS ARE LAID
INSIDE PROTECTIVE HORNY CAPSULE CALLED
MERMAIDS PURSE

ADVANTAGES OF PARENTAL CARE IN FISHES

- I. SURVIVAL
- II. PROTECTION
- III. CONTRIBUTE TO REPRODUCTIVE
FITNESS
- IV. INCREASED GROWTH RATE &
QUALITY
- V. BETTER DEVELOPMENT