

MON 10

② TELEOST FISHES

Bony-fishes

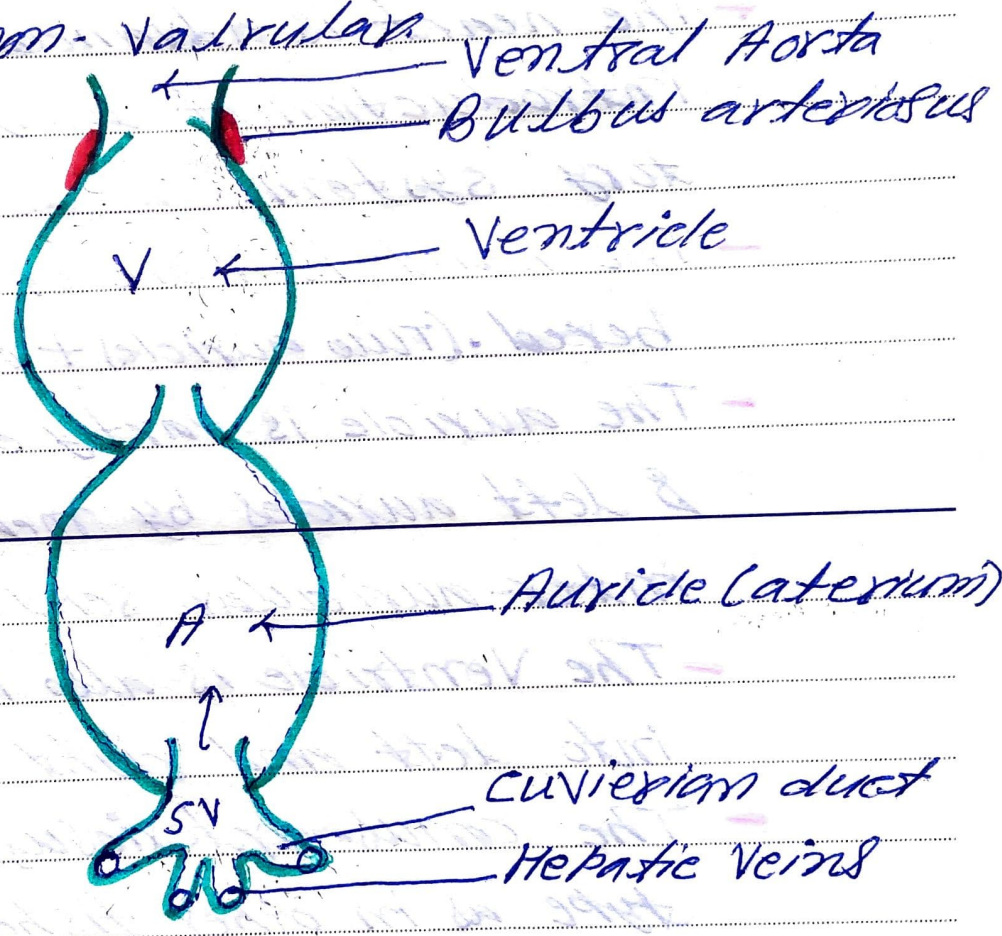
IMPORTANT FOR TODAY

- The heart of bony-fishes is more or less like that of elasmobranchs except in the region of conus-arteriosus.
- The conus-arteriosus is greatly reduced.
- Presence of thick-muscular walled bulbous-arteriosus at the base of

TUE 11

IMPORTANT FOR TODAY

Ventral aorta. It is non-contraction and non-valvular.



WED 12

IMPORTANT FOR TODAY

Fig- TELEOST OR BONY FISH

2003
FEBRUARY

THU 13

ORNTANT FOR TODAY

- In majority of teleost, the conus is represented by a short region with a pair of semilunar valves.
- Presence of single auricle and a ventricle.