

## (c) 9N DIPNOI (Lung Fish)

- In lung fishes the basic plane is similar to other bony fishes.
- Gills are poorly developed.
- So that a pulmonary artery arises from the efferent part of the VI arch on both sides and supplies blood to the developing air bladder or lung.
- Protobranchs = III and IV embryonic arches are uninterrupted by gill capillaries.
- Each arch forms one afferent and two efferent arteries in each gill.
- It is, therefore, the blood reaching the lung has already passed through the normal aerating device of the gill capillaries.

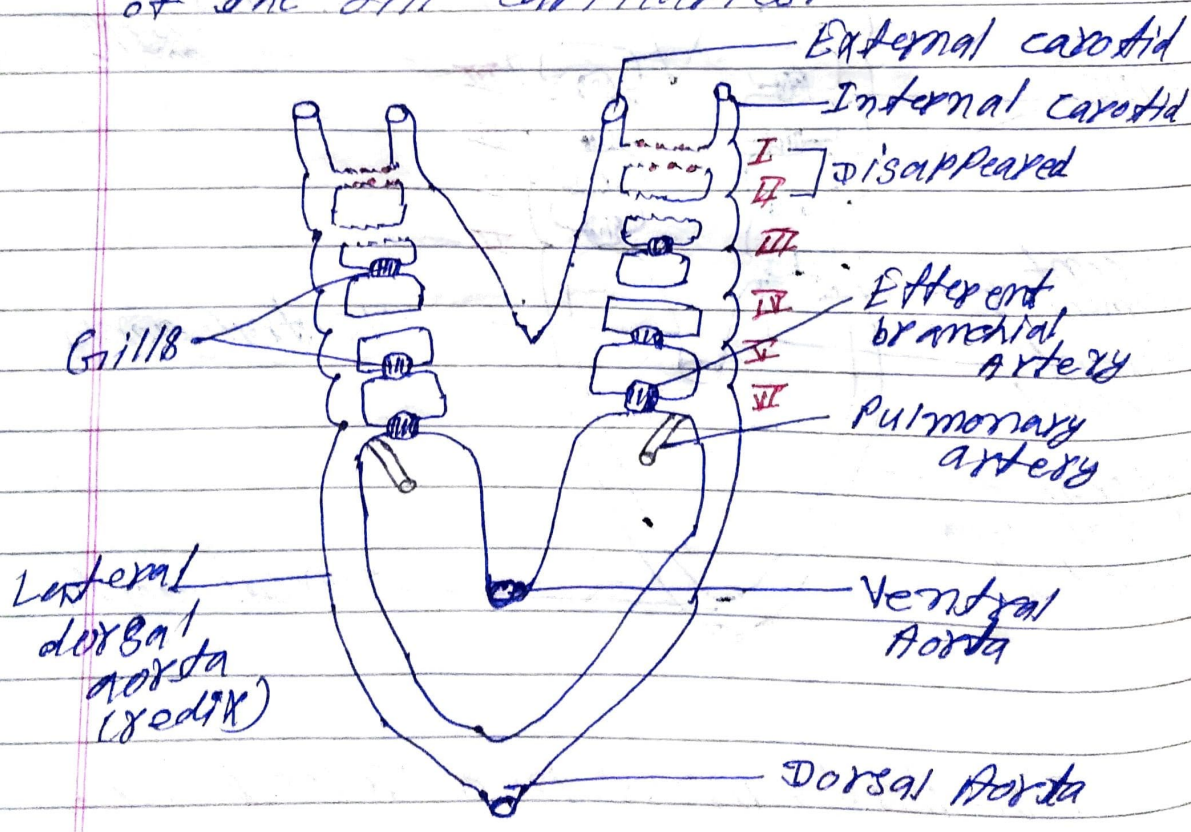


Fig:- Aortic Arches in a Dipnoi Fish