

# (B) IN TELEOSTS

- Unlike elasmobranchs, in most bony fishes.
- The first two pairs of aortic arches, namely the mandibular arches (1st) and hyoid arch (2nd) disappear or ~~are~~ are much reduced.
- This is because second gill-slit is also non functional.
- It is therefore, only four pairs of aortic arches are retained in the adult.
- They are third, fourth, fifth, and sixth pairs.
- Each gill has one afferent and one efferent artery.

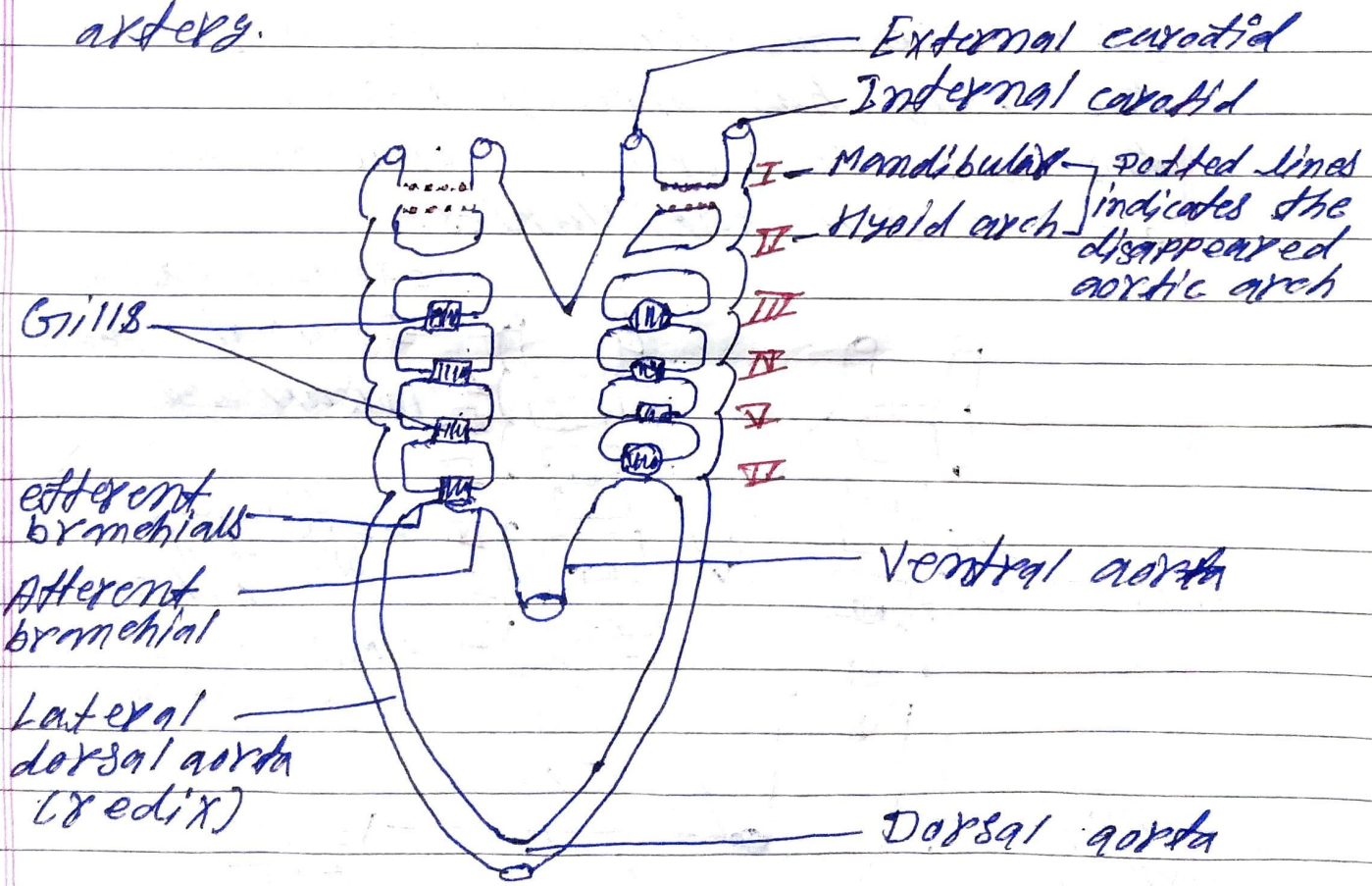


Fig: - Aortic Arches in a Teleost fish.