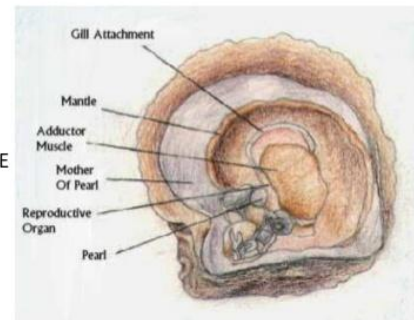
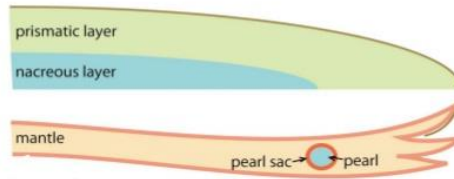


INTRODUCTION

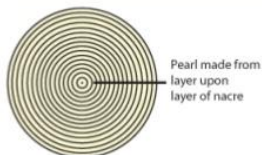
- ❑ IT IS ALSO KNOWN AS "MOTI".
- ❑ A ROUND CONCRETION OF SKELETAL MATERIAL.
- ❑ BIOCHEMICAL PRODUCT OF MOLLUSC.
- ❑ ONLY GEM PRODUCED BY THE LIVING ANIMALS.
- ❑ HIGHLY SHINING GLOBULAR IN SHAPE.
- ❑ PEARL CONSISTS OF A CENTRAL NUCLEUS SURROUNDED BY A SERIES OF PEARLY NACREOUS MATTER.
- ❑ NACRE/MOTHER-OF-PEARL IS A SHINY, HARD PEARLY IRIDESCENT SUBSTANCE FORMING THE INNER LAYER OF A MOLLUSC SHELL.
- ❑ SHELL CONSISTS OF 3 LAYERS, NAMELY AN OUTER ORGANIC LAYER OF CONCHIN AND TWO INNER CALCAREOUS LAYERS



PRODUCTION OF PEARLS

NATURAL WAY

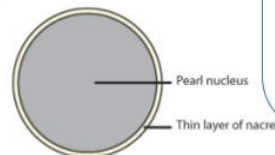
NATURAL PEARLS ARE FORMED DUE TO NATURAL PROCESSES OR DISTURBANCES IN THE ENVIRONMENT WHERE THE OYSTER LIVES.



Natural Pearl

ARTIFICIAL WAY

ARTIFICIALLY INDUCING THE MOLLUSC TO SECRETE NACREOUS MATTER AROUND AN INSERTED NUCLEUS. IT IS PRODUCED BY HUMAN INTERFERENCE AND IS KNOWN AS CULTURED PEARL. CHIEF IMITATIONS MADE OF PLASTICS THAT HAVE AN ARTIFICIAL LUSTRE ARE KNOWN AS ARTIFICIAL PEARL.



Cultured Pearl