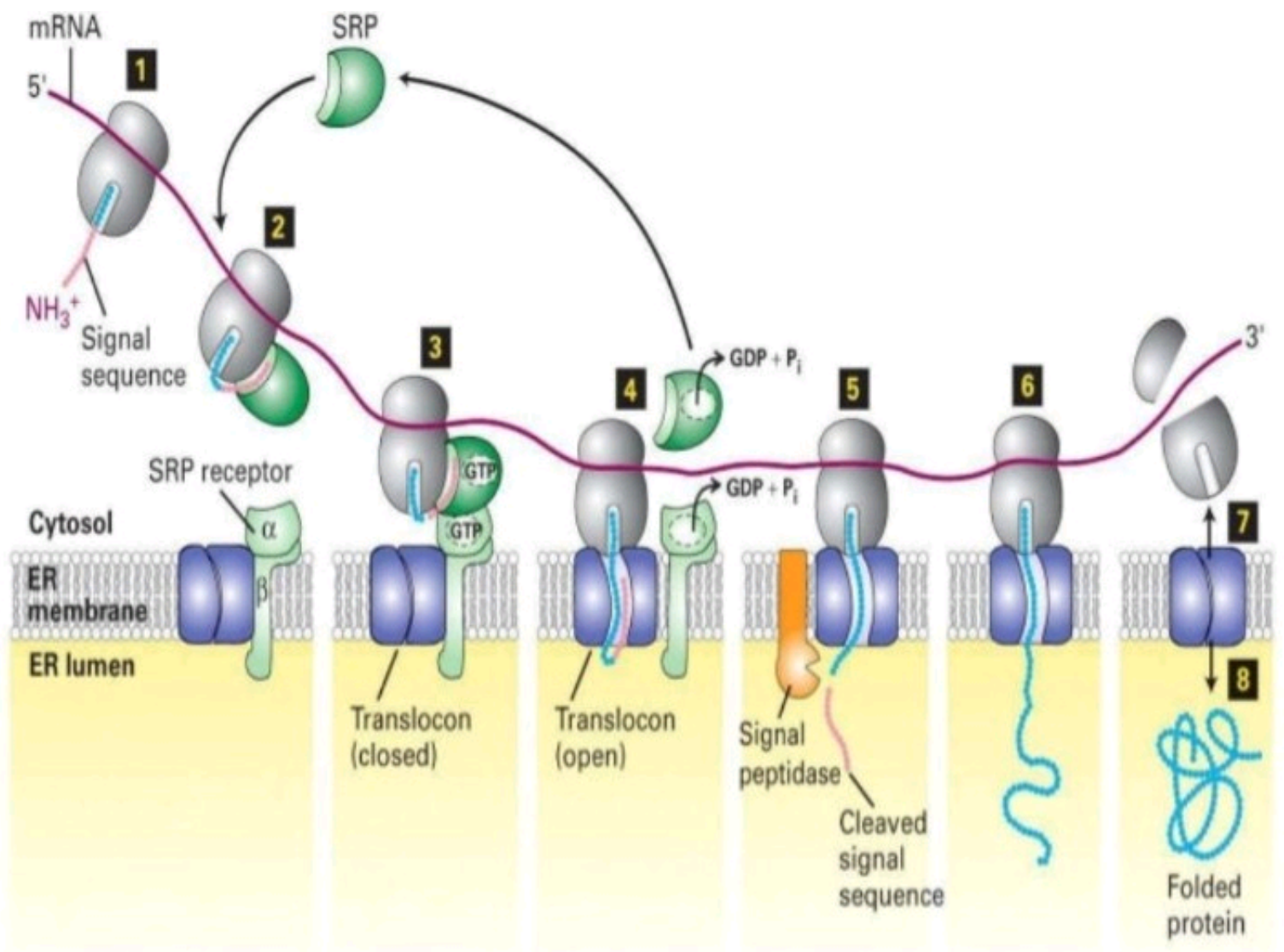
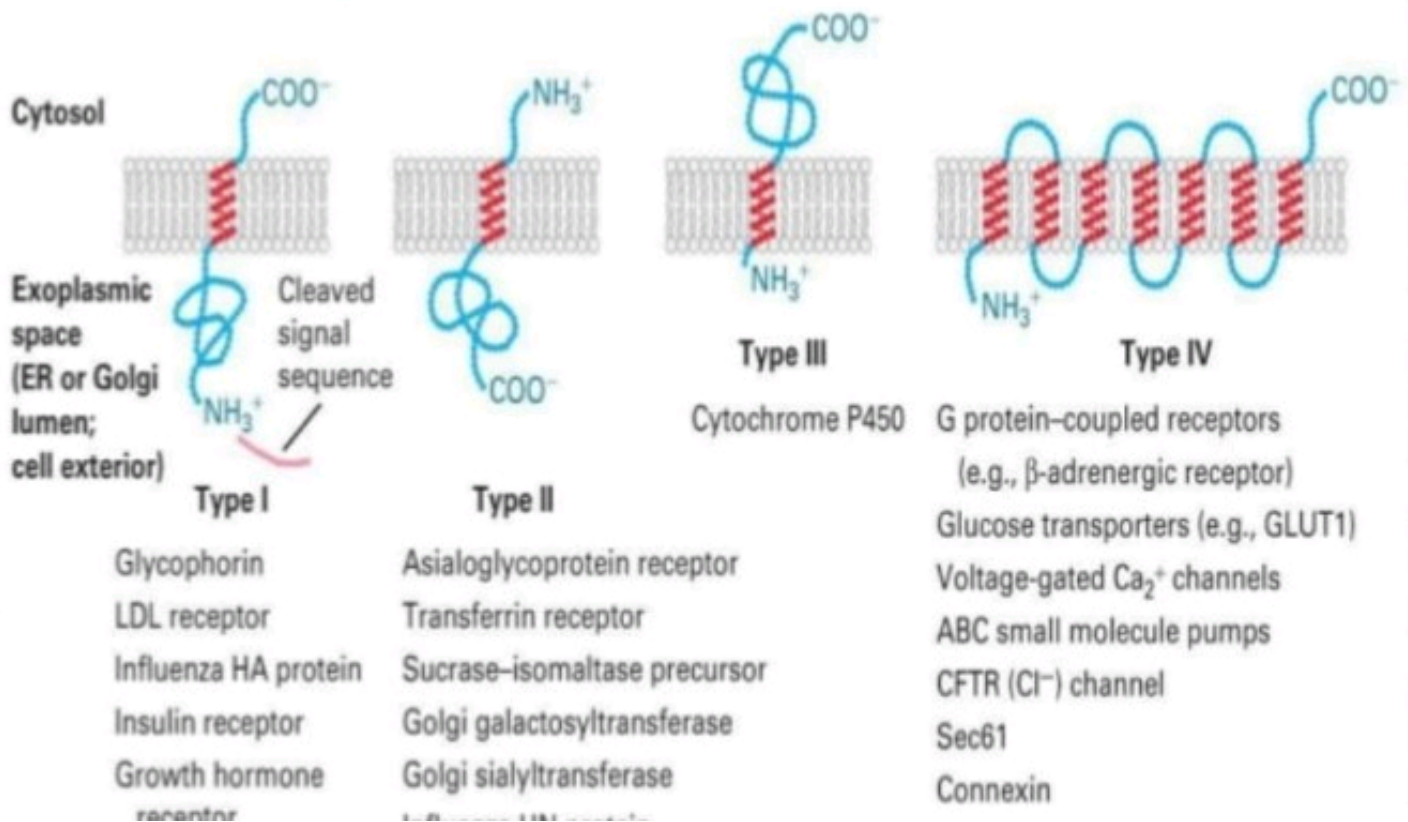


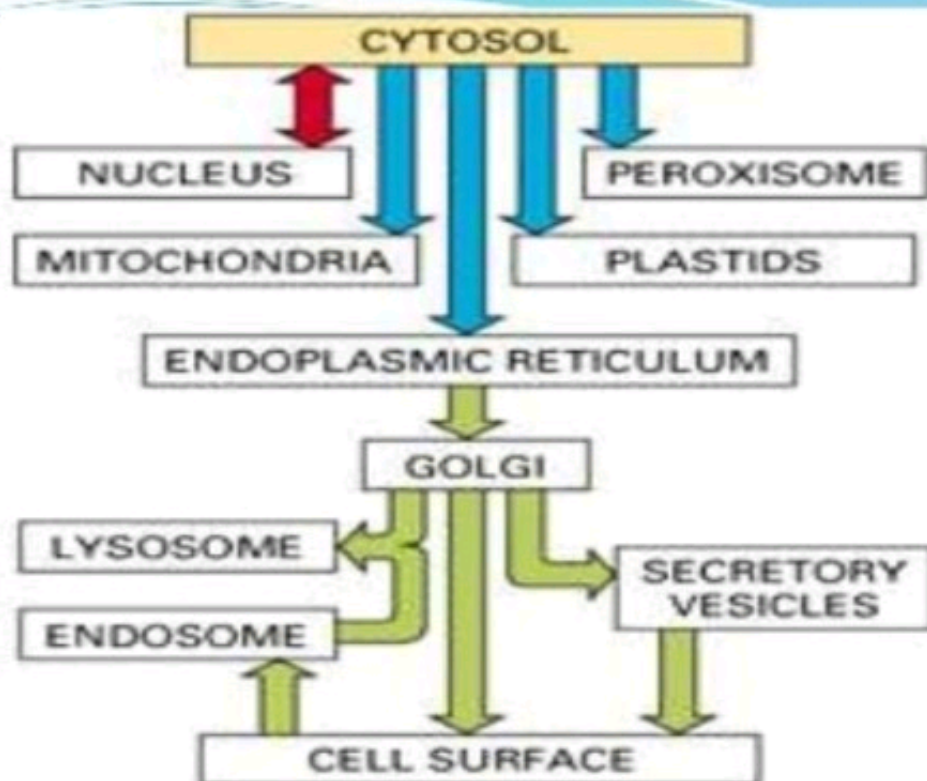
and then co-translational translocation across the ER membrane

- ER signal sequence emerges
- The binding by a signal-recognition particles (SRP)
- SRP delivers the ribosome/nascent polypeptide complex to the SRP receptor in the ER membrane, and GTP binding



synthesized on the rough ER





KEY: █ = gated transport
█ = transmembrane transport
█ = vesicular transport