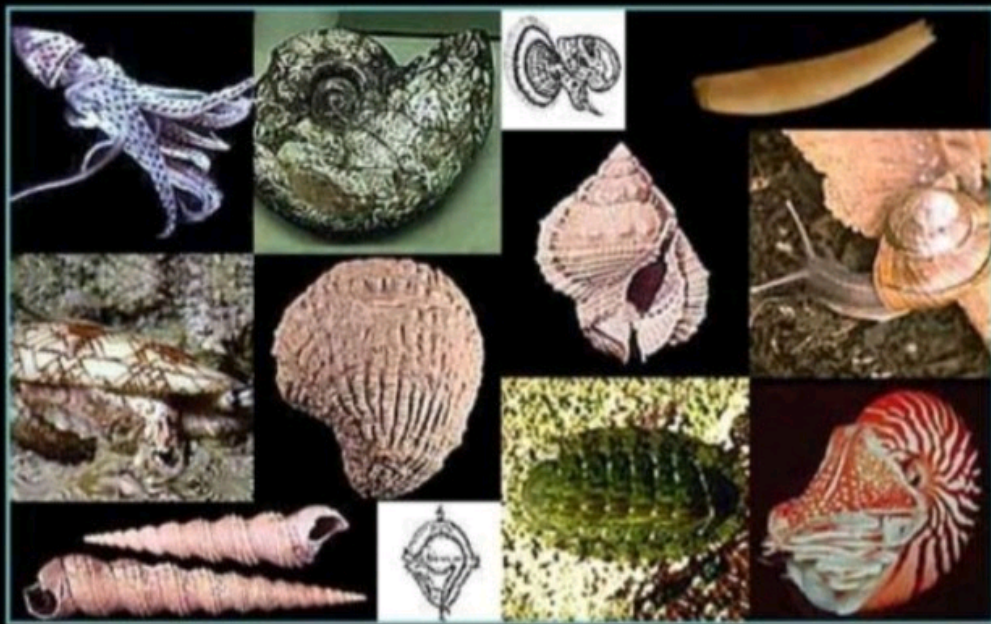


Phylum Mollusca



GENERAL CHARACTERISTICS

- **BODY CHARACTERS :**

Soft

Unsegmented

Triploblastic

No jointed appendages

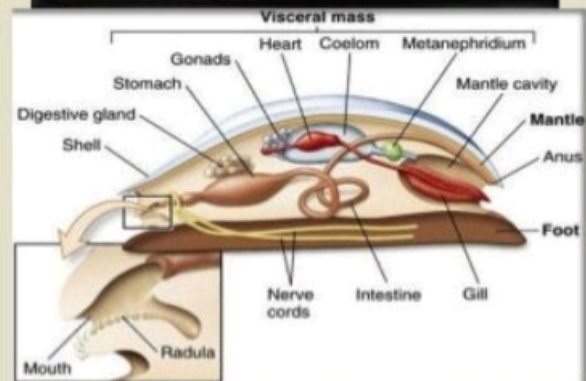
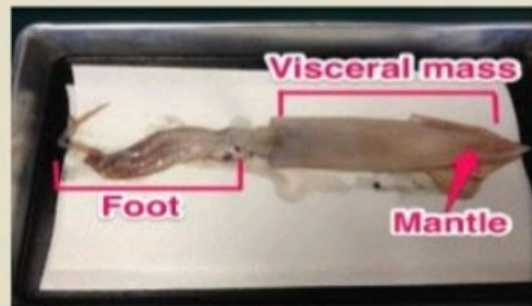
- **SYMMETRY :** Bilaterally symmetrical

- **SHELL :** Externally mantle secretes a hard , brittle , calcareous shell .
It protects the soft body .



DIVISION OF BODY – *head , mantle , visceral mass and foot*

- **HEAD** : It carries mouth , eyes and tentacles.
- **FOOT** : It is ventral , thick and muscular .
Variously modified for creeping and seizing .
- **MANTLE** : It is a thick muscular fold of body wall .
- **VISCERAL MASS** : Contains all internal organs .



GENERAL CHARACTERISTICS [visceral mass]

• DIGESTIVE ORGANS :

Alimentary canal is well developed and coiled .

▪ RESPIRATION :

Respiration by gills enclosed in mantle cavity .

▪ CIRCULATORY SYSTEM :

It is of lacunar type with dorsal heart & few blood vessels .

▪ EXCRETORY ORGANS :

One or two pairs of kidney .

▪ NERVOUS SYSTEM :

Comprises of paired cerebral, plural, pedal and visceral ganglia .

▪ REPRODUCTION :

*Sexes are usually separate but may be united .
Gonads are usually unpaired .
Fertilisation can be either external or internal .*

