

# Mouth parts of Insects

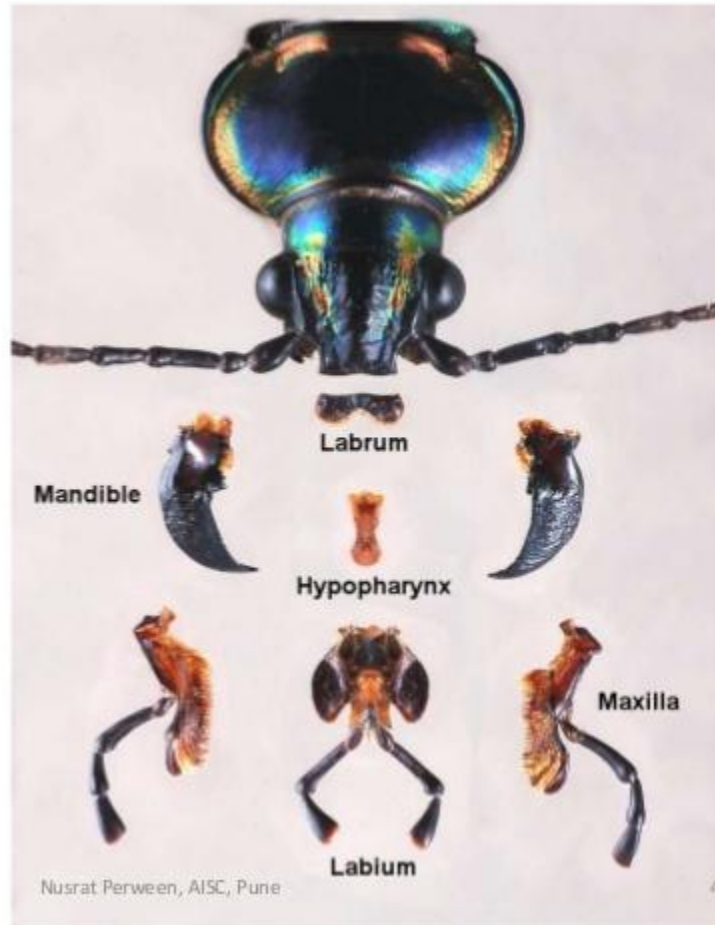
Dr Anita Kr

Deptt. Of Zoology

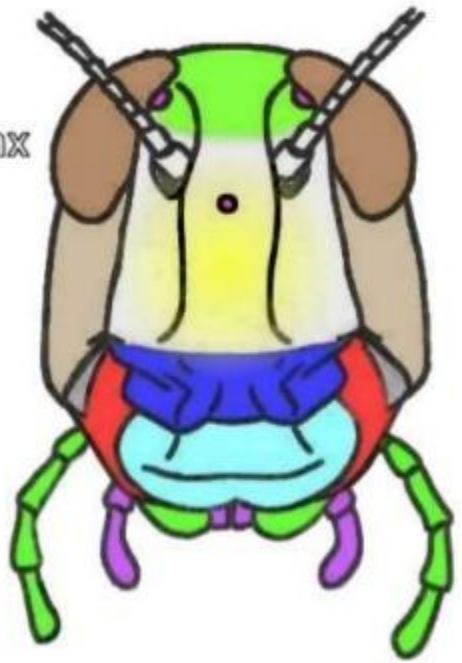
L.S.College, Muzaffarpur



five basic  
components of  
mouthparts:



Labrum  
**Mandibles**  
Maxillae  
Hypopharynx  
**Labium**



# Types

- Biting and chewing



- lapping



- Piercing and sucking



- Sponging

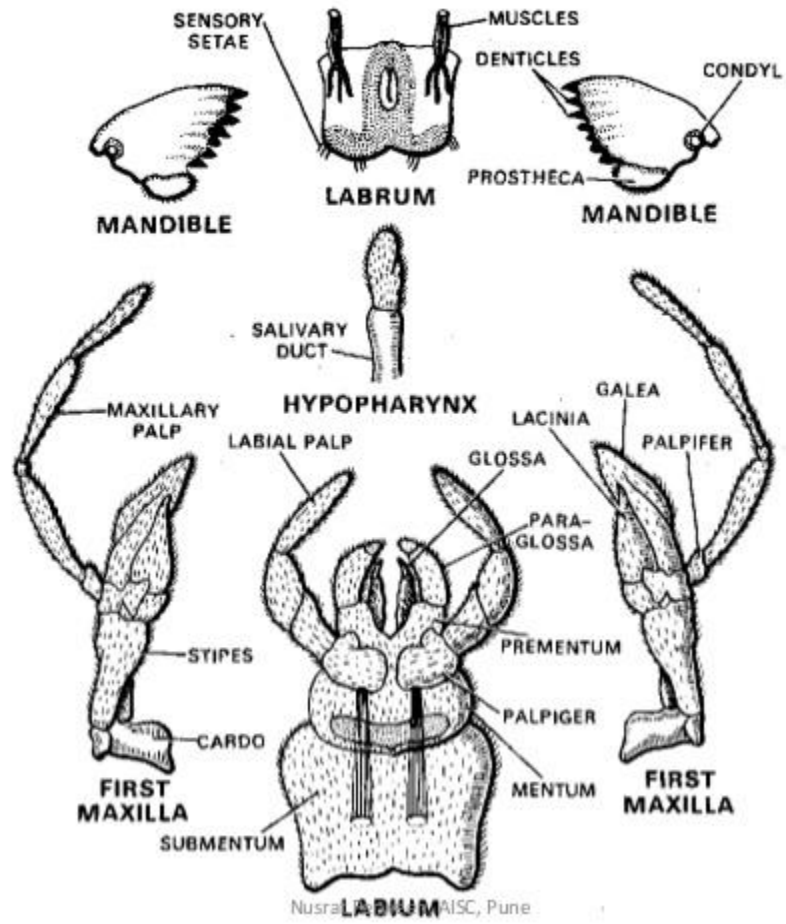


- Siphoning



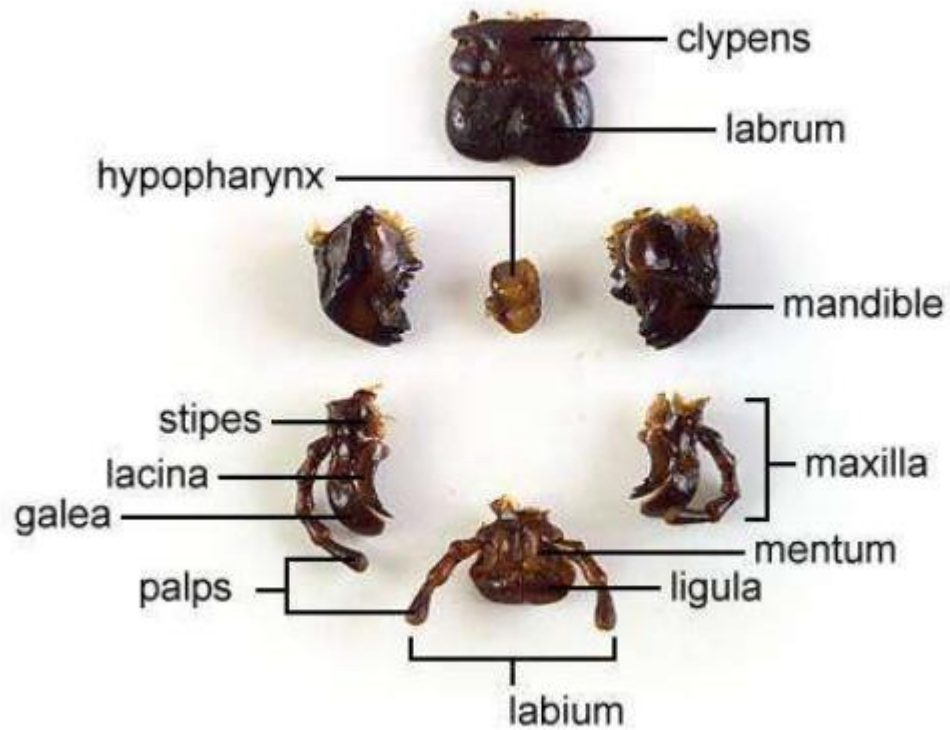
## Biting and chewing

- basic and most primitive type of mouthparts
- grasshopper, cockroach and beetles
- i. Labrum
- ii. Epi-pharynx
- iii. Mandibles
- iv. Maxillae
- v. Labium
- vii. Hypopharynx

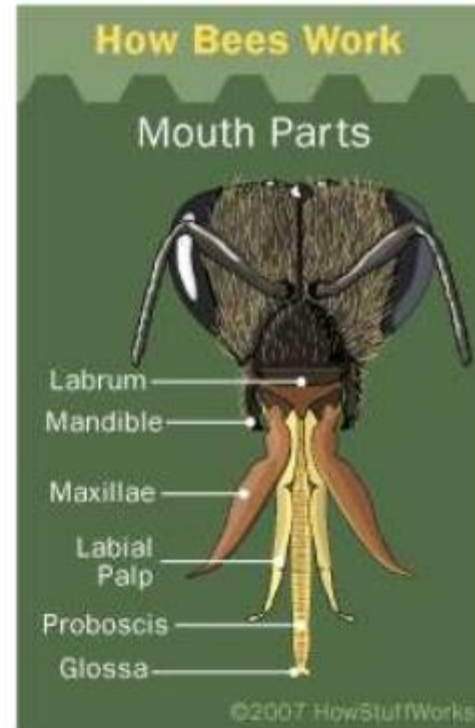




## Grasshopper - Mouthparts



- **Chewing and Lapping Type**
- **e.g. Honey bee**
- Labrum & Mandibles remain more or less similar as that of the Generalized type,
- Maxillae & Labium are greatly modified



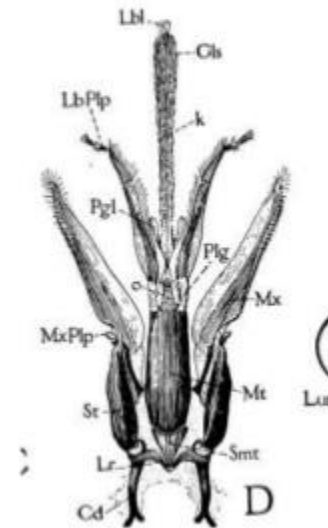
- **Chewing and Lapping Type**
- **e.g. Honey bee**
- Labrum & Mandibles remain more or less similar as that of the *Generalized type*,
- Maxillae & Labium are greatly modified



- **Labrum.** It is narrow and quite simple.
- **Mandibles:** They are blunt dumbbell shaped and are not toothed.
- They are not used for feeding but are useful for moulding wax into cells for comb (next) building.



- **Labium:** The glossae are greatly elongated to form a hairy, flexible tongue.
- The glossa terminates into a small circular spoon shaped lobe called labellum, which is useful to lick the nectar.



- **Maxillolabial Structures:**
- Maxillobial Structure are modified to form the lapping tongue.
- The tongue unit consists of the two galeae of maxillae, two labial Palpi and elongated flexible hairy glossa of labium.

