

Mode - 09.

Graphic Method of Location Mode.

Mode of a series may be located through a graphic presentation of the data. It involves the following steps:

- (i) Present the given information in the form of a histogram. Identify the highest rectangle. This corresponds to modal class of the series.
- (ii) Join the top corners of the modal rectangle with the immediate next corners of the adjacent rectangles. The joining lines must cut each other.
- (iii) The point where the joining lines cut each other points to the modal value. This value is determined by drawing a perpendicular

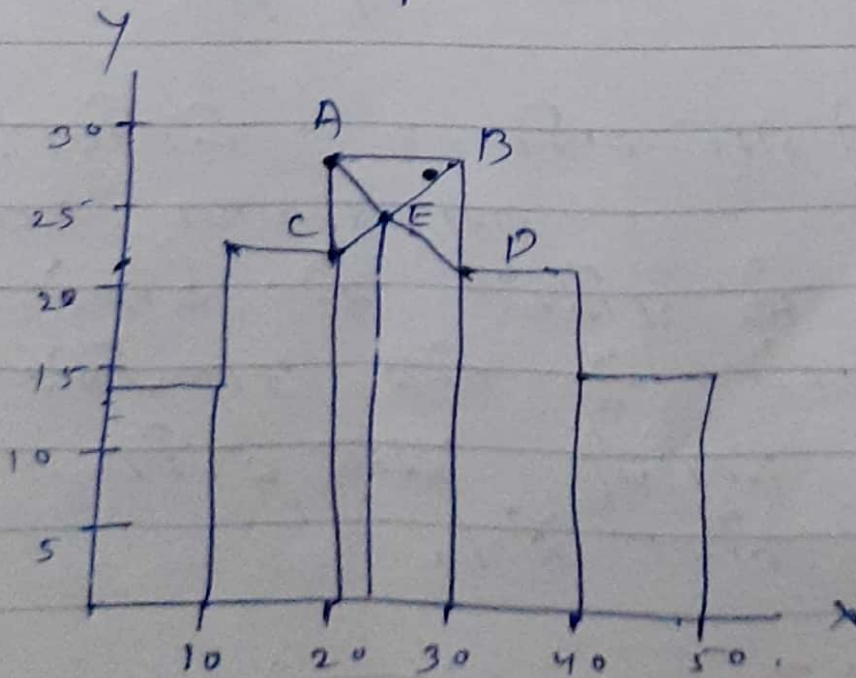
from that point on to the x-axis.

Illustration

Calculate mode of the following series, using the graphic technique

Expenditure	No. of families
0 - 10	14
10 - 20	23
20 - 30	27
30 - 40	21
40 - 50	15

Graphic Location of Mode.



$$Z = 24$$

A perpendicular is drawn from point E on the x-axis to locate the exact value of mode which is 24.