

# URINOGENITAL SYSTEM OF LIZARD

The excretory and reproductive system are intimately associated particularly in males and the two systems are referred to as urinogenital system.

## Male Urinogenital System:

### ① Excretory system:

The excretory organs are kidney, ureter and urinary bladder.

① KIDNEY: The kidneys are pair of pear shaped bodies situated in the posterior region of abdominal cavity. Each kidney consists of an anterior and a posterior lobe. Anterior lobe is wide and free while posterior lobe is narrow. Both kidneys remain united posteriorly and give a V-shape.

ii) Ureter: From the <sup>ventro</sup>antero-lateral body of anterior one-third of each kidney arises a small, narrow delicate duct, the ureter. Each ureter opens separately into the chamber of cloaca called urodaeum. The opening of ureter are situated on small papillae.

iii) Urinary Bladder: Attached to the cloaca is a thin walled sac, the urinary bladder. Fluid are reabsorbed from cloaca and urinary bladder, so that the urine is semi-solid and consists mainly of uric acids.

## Male reproductive System:

The male reproductive organs consists of

i) Testes ii) Vas-deferens iii) Copulatory sacs.

i) Testes: Testes are a pair of ovoid bodies, much anterior to the kidney. The right testis lies ahead of left.

ii) Vas-deferens and Epididymis: Some anterior tubes of mesonephros are connected to the seminiferous tubules of the testis of each side. These tubes are called vasa efferentia. They pass through the mesorchium to enter the epididymis.

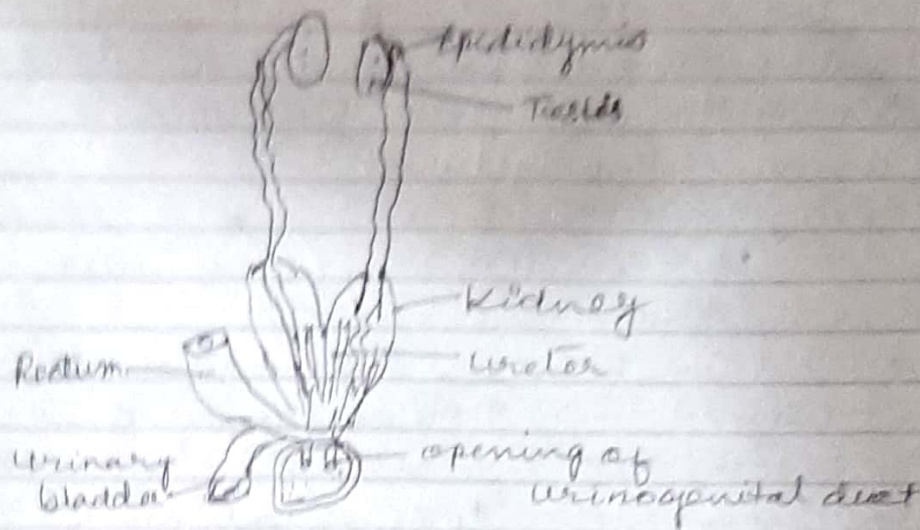


Fig - Male reproductive organ of lizard.

The epididymis is anterior thickened and convoluted part of the vas-deferens. The epididymis represents the remanence of the mesonephros.

Each epididymis is continued behind as a much coiled narrow tube, the vas-deferens, which is the persistent mesonephros or wolffian duct. The vas-deferens runs along the ventral surface and passes back to open into the urodaeum. The copulatory organs are paired sac like structures also called hemipenis.

### iii) Copulatory sacs:

The copulatory sacs are grooved and eversible pouches which are tucked into the basal part of the tail under skin. The hemipenis are actually the bilaterally sacculation of the cloaca of the female and seminal fluid passes along its groove.