

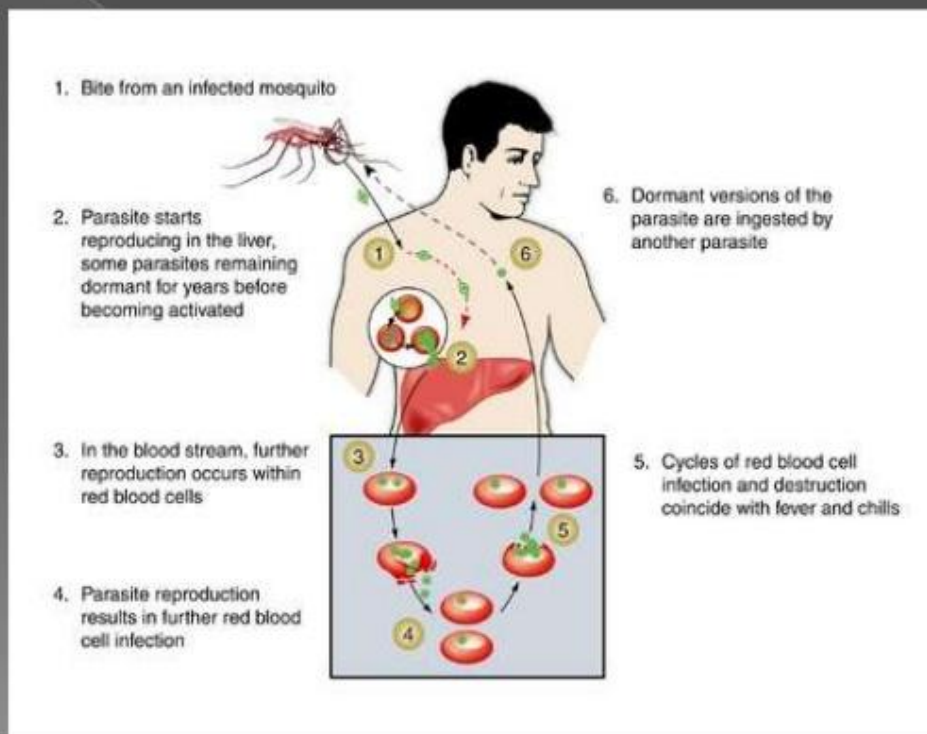
Introduction

- Malaria is a Mosquito-Borne febrile Disease caused by Malaria Parasites
- Malaria (Mala means Bad and Aria means Air) is a Protozoal Infection
- A disease caused by members of the protozoan genus *Plasmodium*, a wide spread group of sporozoans that Parasites affect the human liver and red blood cells.
- Humans are infected with *Plasmodium* protozoa when bitten by an infective **female Anopheles mosquito vector**.
- Symptoms may appear within weeks to months or even years.

Conti...

- There are 4 species of Malaria Parasites :
 - > plasmodium Falciparum
 - > plasmodium Vivax
 - > plasmodium ovale
 - > plasmodium Malariae
- Malaria Found in about 100 Countries in the World
- Maximum Prevalence of Malaria is found in Warm & Humid Environment and Mostly seen in July to November in India
- Optimal Temp & Humidity for the Development of Parasite is 20 to 30 F and about 60% Humidity.

Pathophysiology



Events in Humans start with Bite of Mosquito

- Man – Intermediate host.
- Mosquito – **Definitive host**
- **Sporozoites are infective forms**
- Present in the salivary gland of female anopheles mosquito
- After bite of infected mosquito sporozoites are introduced into blood circulation.

