

SUGARCANE EARLY SHOOT BORER



Larva



pupa



Egg

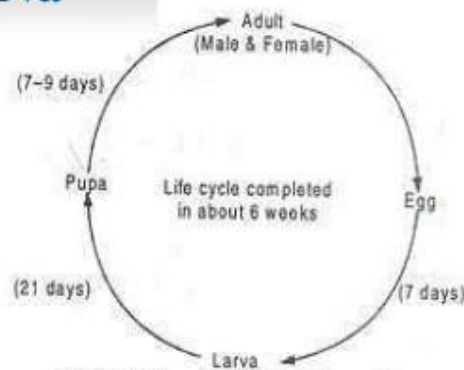


Fig. 66. Life cycle of *Chilo infuscatellus*.



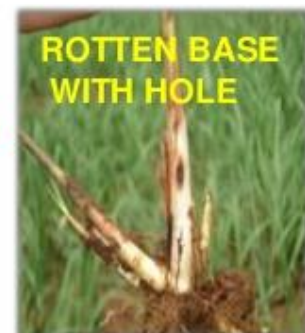
adult

SYMPTOMS OF DAMAGE

- Attack 1-3 month old crop and cause **Dead heart**, which can be easily pulled out.
- Rotten portion of the cane coloured dead heart **emits an offensive odour**.
- A **number of bore holes at the base** of the shoot just above the ground level.



DEAD HEART



ROTTEN BASE WITH HOLE

INTERNODE BORER



Adult

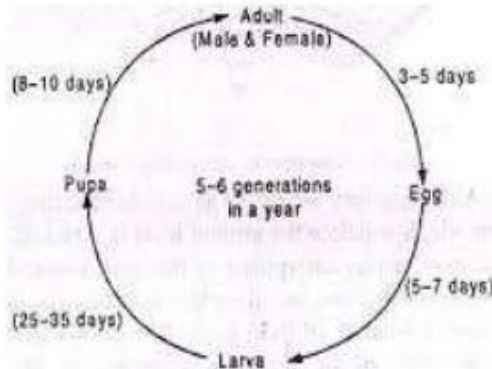


Fig. 72. Life cycle of *Chilo indicus*.



Larva

- Adult moths are **yellowish** or **straw coloured** with thin brown lines along the length of the forewings
- Hind wings in females are white but slightly darker in males

- Larvae are **white** with a **black head** which later become creamy in colour with **prominent brown spots**
- Body bearing **stout hairs** in each section of the body

SYMPTOMS OF DAMAGE

- ⊕ Constricted and shortened internodes, with a number of boreholes filled with **excreta at nodal region**.
- ⊕ **Reddening** of affected tissues inside the cane.
- ⊕ Fresh borer attack is mostly found in **the top five immature internodes** and its activity continues till harvest.

