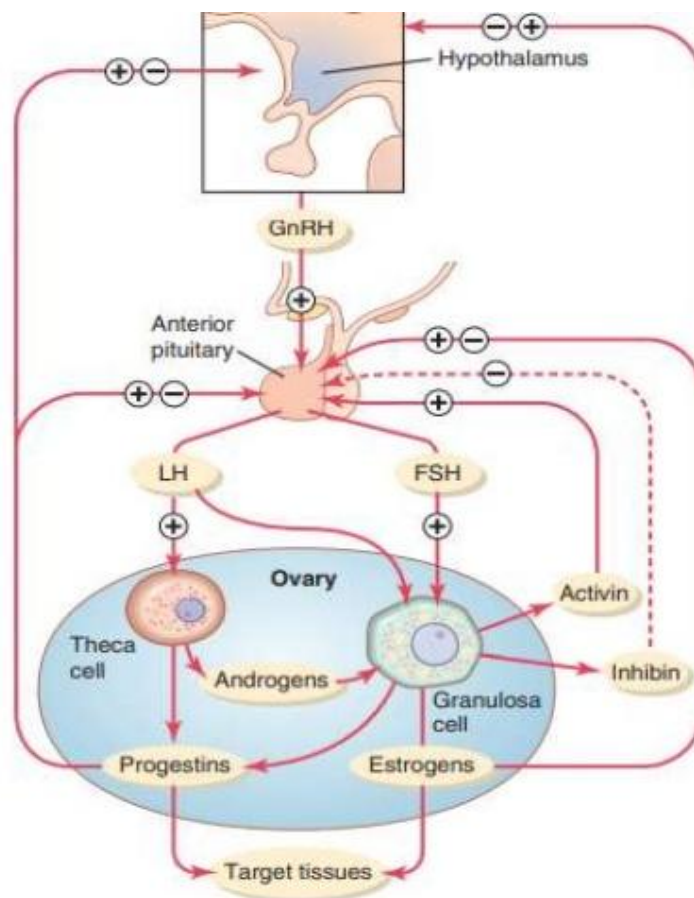


Menstrual Cycle

- The monthly rhythmical cycle of changes in R/O secretion of female hormones and corresponding physical changes in ovaries and other reproductive organs is called menstrual cycle.
- Normal duration: 28days (20-45 days)



Regulation of Monthly Cycle

Negative feedback regulation

- Estrogen in small amount
- Progesterone
- Inhibitory effect is multiplied in presence of both hormone

Positive feedback regulation

- Estrogen in peak level (LH 6 to 8 times and FSH 2 times)

Ovarian Phases

1. Follicular or Pre-ovulatory Phase
2. Luteal or Post-ovulatory Phase

Uterine Phases

1. Bleeding Phase (1st-5th day)
2. Proliferative Phase (6th -14th day)
3. Secretory Phase (15th -28th day)

Menstrual Phase

