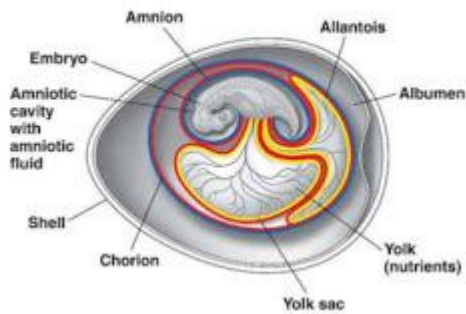
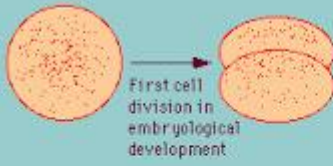


Amniotic cleidoic egg

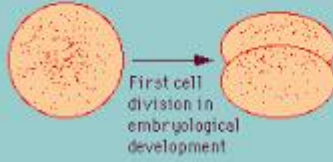


Indeterminate Cleavage:

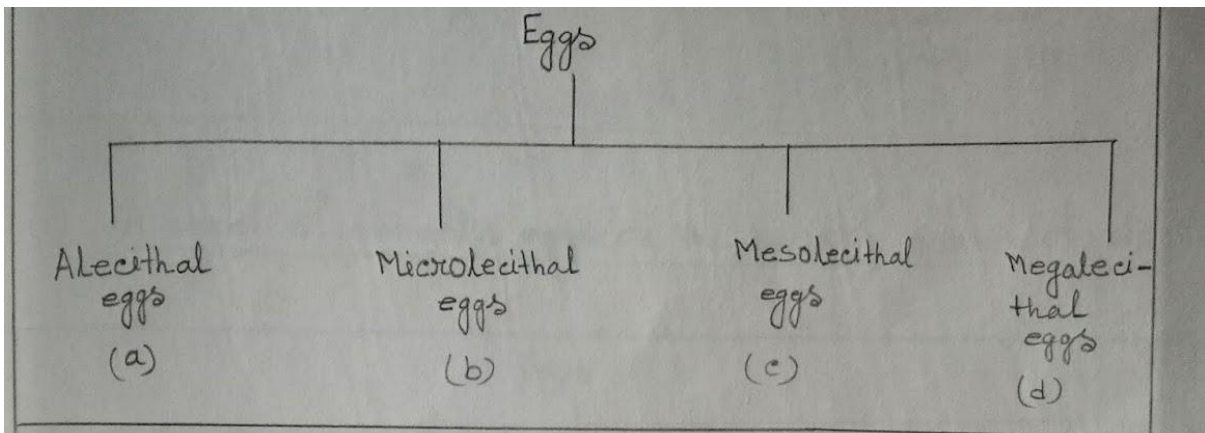


If these cells are separated from each other, each has the potential to develop into an entire organism on its own.

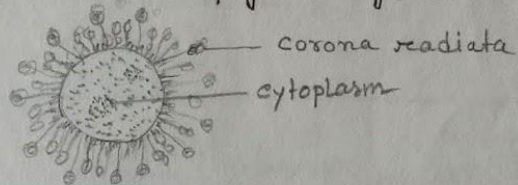
Determinate Cleavage:



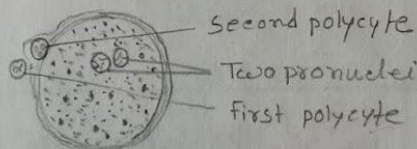
If these cells are separated from each other, they will **die**. Neither has the potential to develop into an organism on its own.



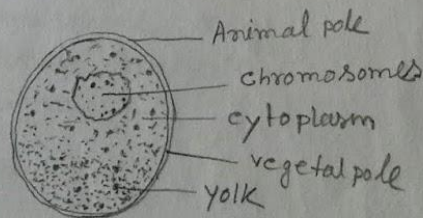
① Alecithal eggs :- They have no any yolks. e.g., human egg.



② Microlecithal eggs have little yolk in form of granules, e.g., echinoderms.



③ Mesolecithal eggs with moderate amount of yolk, e.g.: tunicates.



④ Megalecithal or heavily yolked eggs, e.g., boney fishes, birds.

