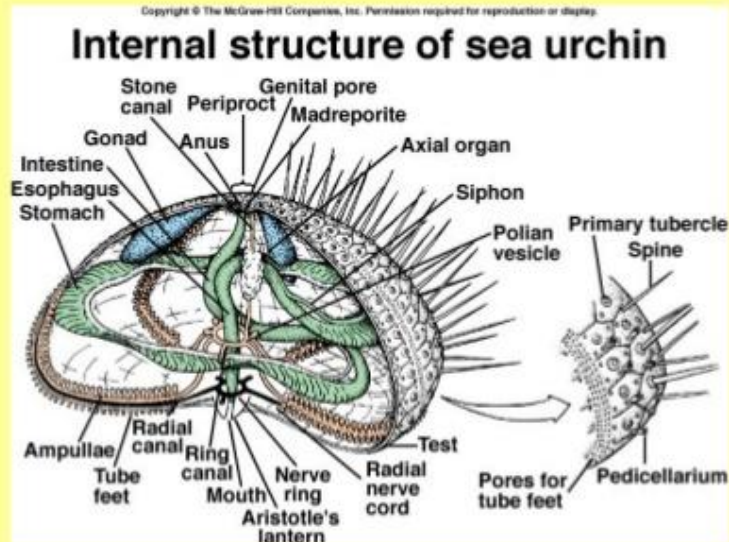


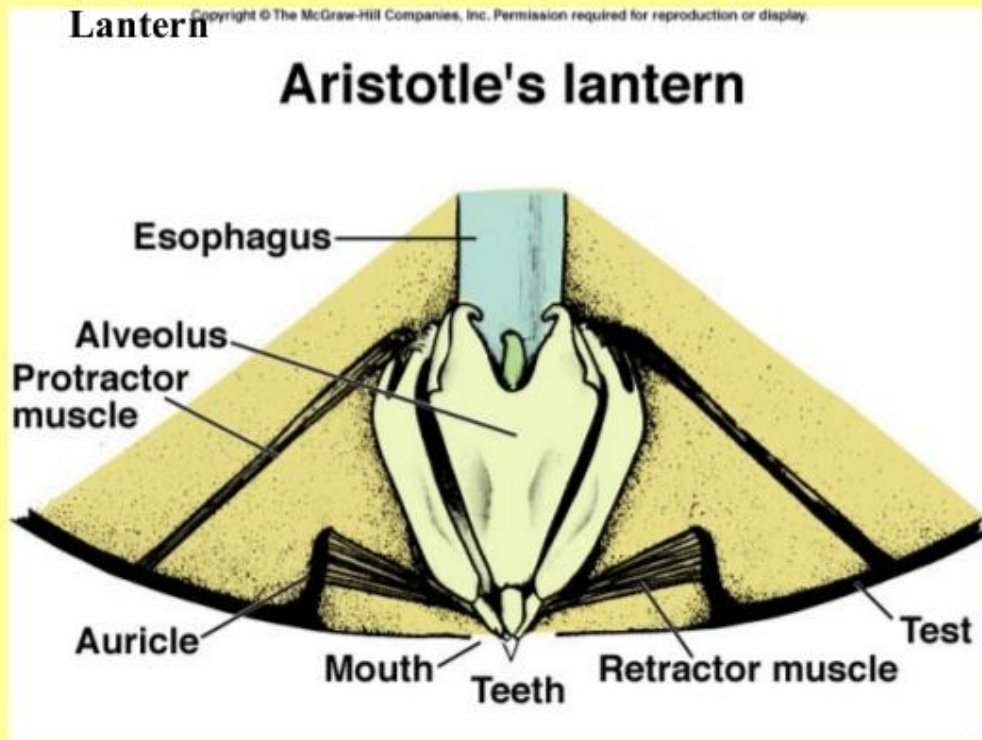
Class Echinoidea

- no arms
- skeleton is fused into a solid test
- tube feet have suckers
- covered with moveable spines and pedicellariae



Class Echinoidea

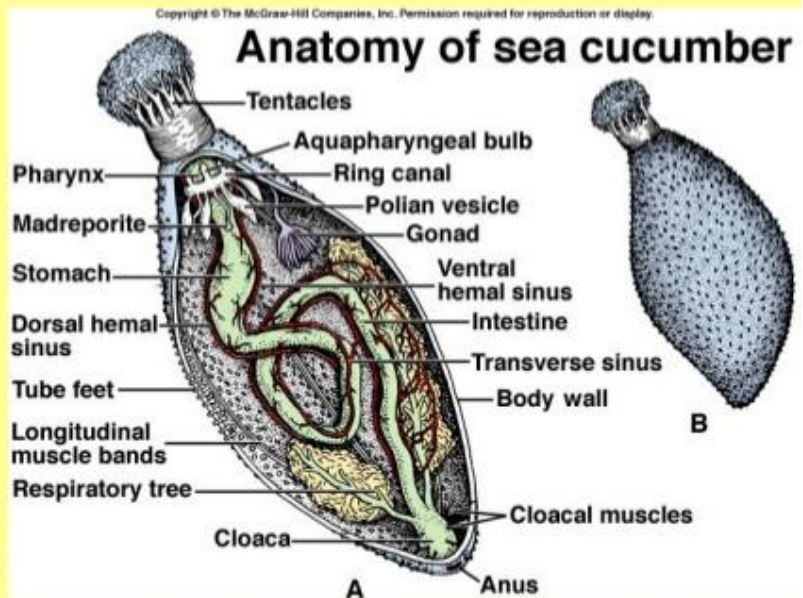
specialized mouth structures - Aristotle's Lantern



Class Holothuroidea

Sea cucumbers

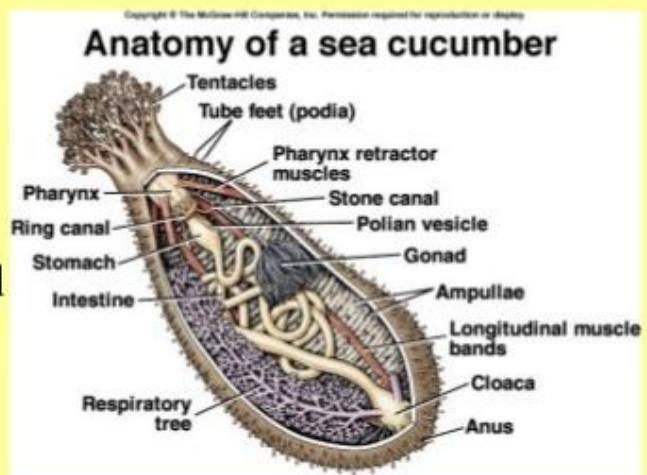
- body elongated in oral-aboral axis
- skeletal system reduced or absent
- no spines or pedicellariae
- mouth and anus at opposite ends of body



Class Holothuroidea

Sea cucumbers

- no external madreporite
- tube feet with suckers
- respiration through anal respiratory tree
- dioecious; single gonad
- suspension or detritus feeders
- commensal relationship with pearl fish



Class Crinoidea

Sea Lillies

- most are extinct
- most primitive
- all sessile, with stalk that attaches to substrate
- have branched arms for filter feeding
- no suckers on tube feet
- no madreporite
- no pedicellariae

