

# BRAIN

## GN AVES

21/11/2003

2003  
MAY

TUE 13

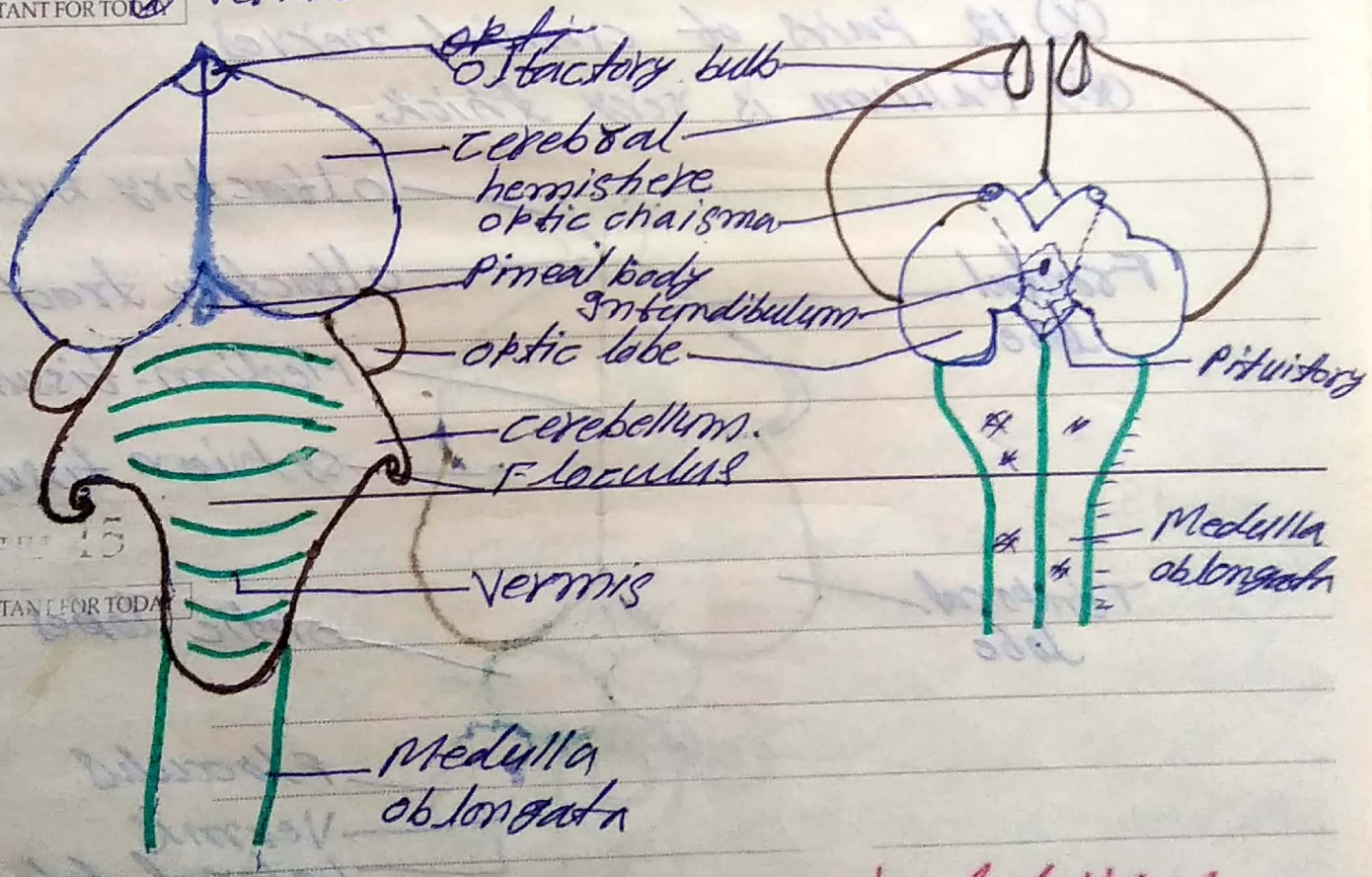
IMPORTANT FOR TODAY

- (i) Olfactory lobes are very much reduced.
- (ii) Cerebral hemispheres are smooth & developed.
- (iii) Corpora-striata are large & complex.
- (iv) Lateral ventricles are small.
- (v) Optic lobes are paired, large & well developed.
- (vi) Cerebellum is large.
- (vii) Medulla oblongata is very short.
- (viii) 12 pairs of cranial nerves.

WED 14

IMPORTANT FOR TODAY

- (ix) Pallium is thick, & well developed.
- (x) Vermis is present.



IMPORTANT FOR TODAY

Dorsal View

Ventral View

FRI 16 (i) olfactory lobes are distinct.

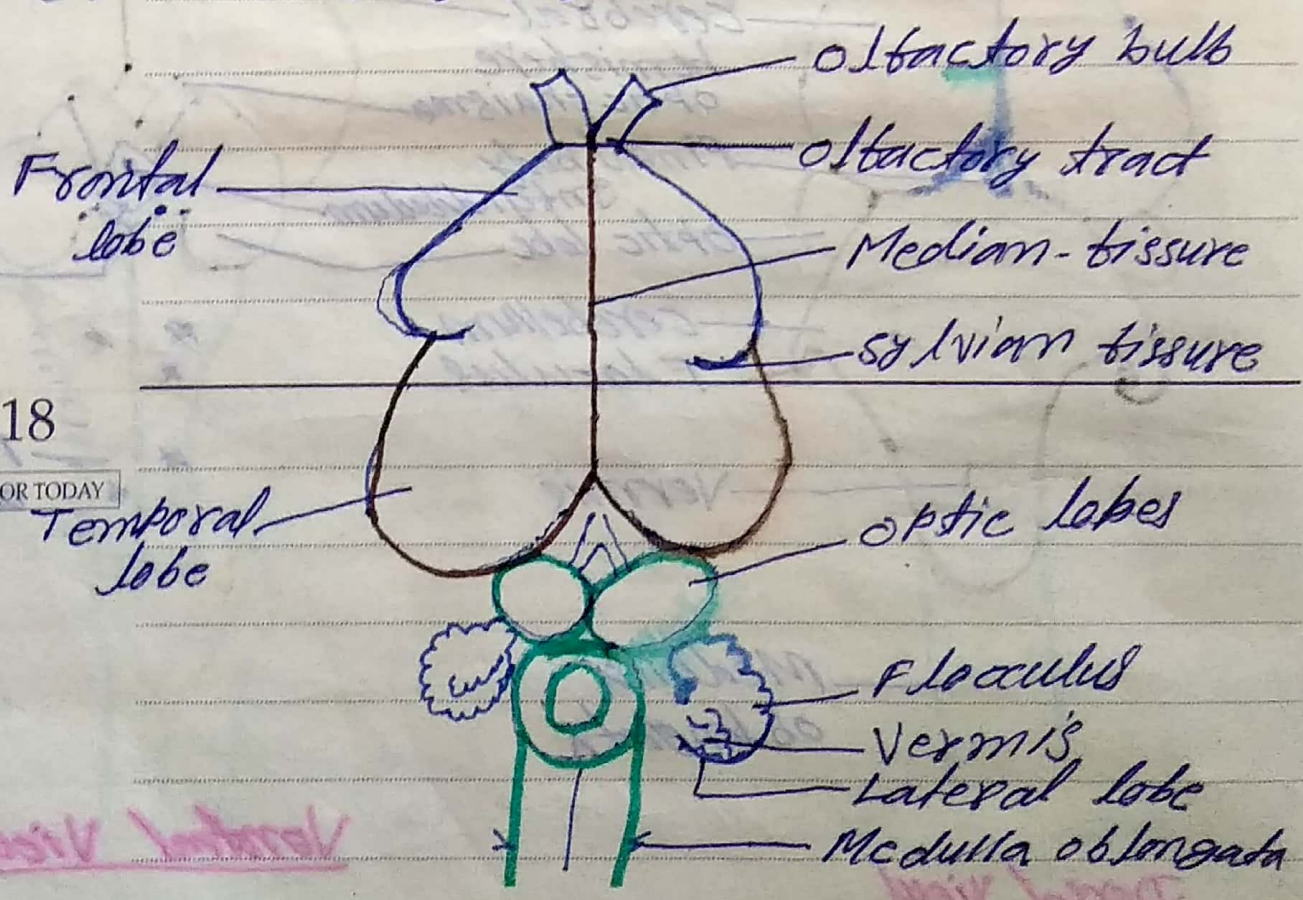
IMPORTANT FOR TODAY

- (a) Median-tissure is present:
- (ii) sylvian-tissure is present.
- (iii) corpus albicans and two olfactory bulb-present.
- (iv) optic lobes are present.
- (v) cerebellum is well developed.
- (vi) Pons verolii is thick band.
- (vii) Arbor-vitae is tree like structure.

SAT 17 (ix) Medulla oblongata is much thickened.

IMPORTANT FOR TODAY

- (x) 12 pairs of cranial nerves.
- (xi) Pallium is very thick.



SUN 18

IMPORTANT FOR TODAY

Dorsal View