

# BRAIN

WED 7

## IN AMPHIBIANS

2003  
MAY

IMPORTANT FOR TODAY

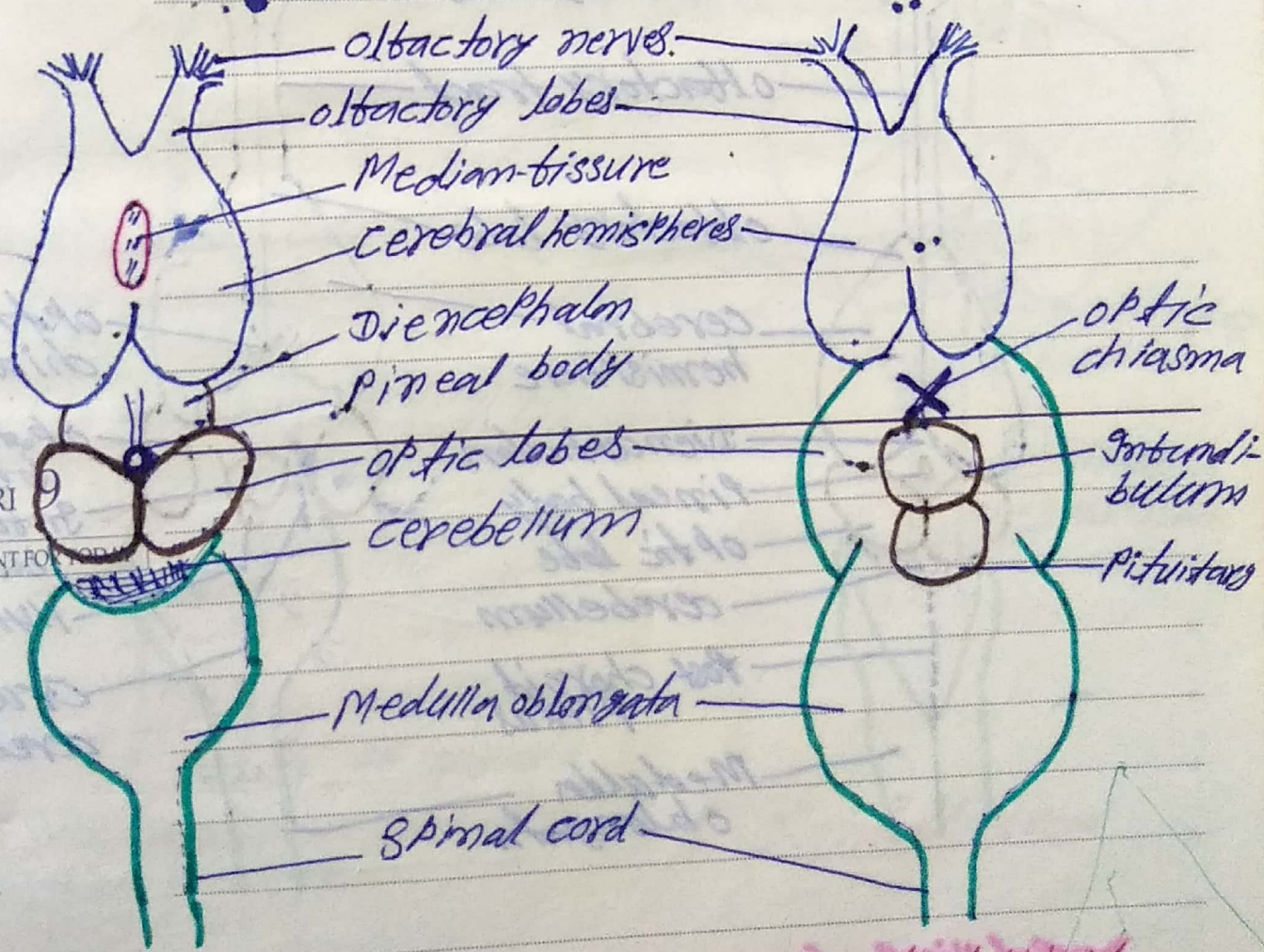
- (i) Enclosed in bony cranium.
- (ii) Presence of two olfactory lobes & optic lobes.
- (iii) Cerebrum is divided into two cerebral hemispheres.
- (iv) Infundibulum is well developed.
- (v) cerebellum is small and reduced.
- (vi) Medulla oblongata is straight.

THU 8

(vii) 10 pairs of cranial nerves.

IMPORTANT FOR TODAY

(viii) olfactory peduncle is absent.



Dorsal View

Ventral View

# BRAIN

## IN REPTILES

2003  
MAY

SAT 10

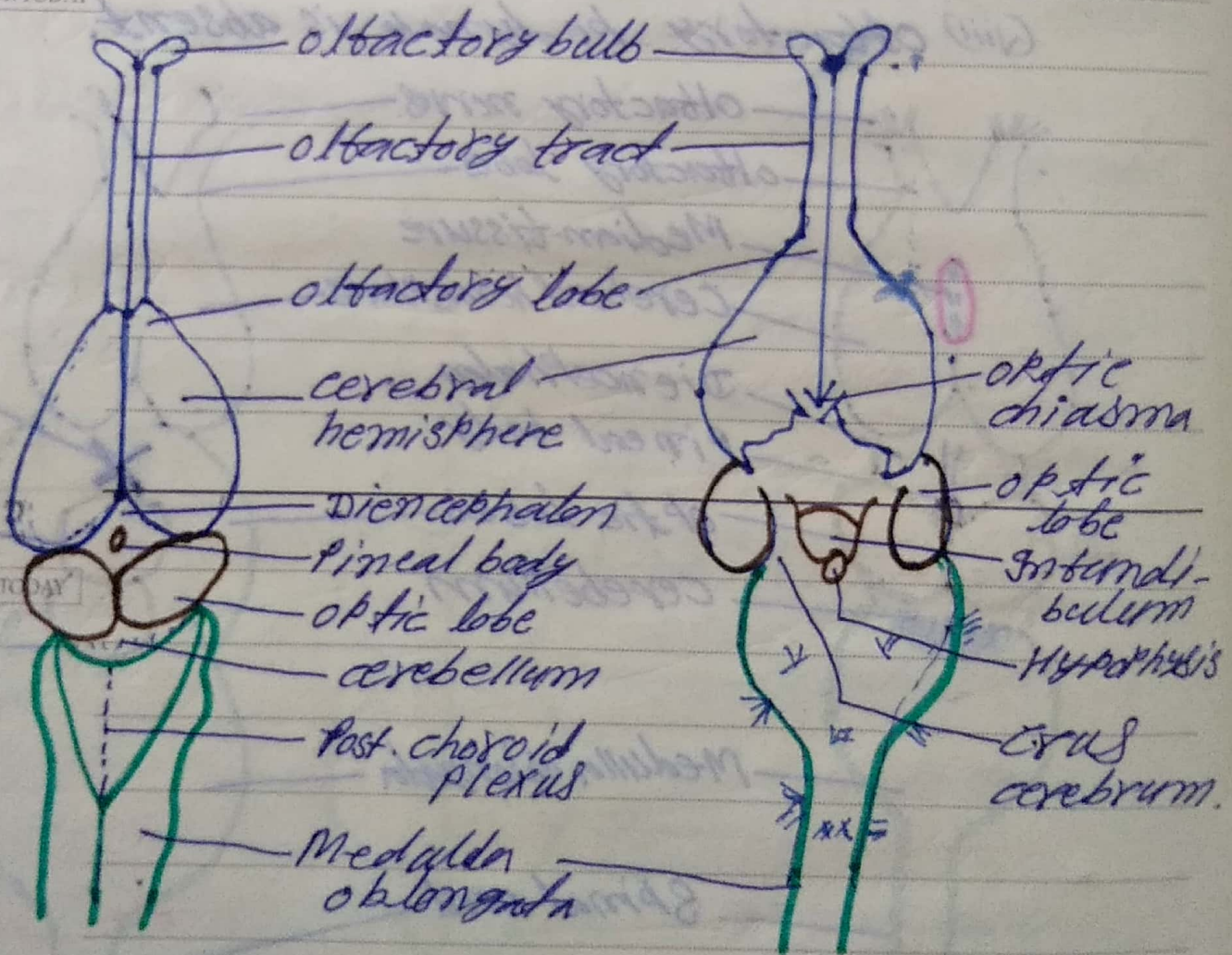
IMPORTANT FOR TODAY

- (i) Cerebral hemisphere is large & well developed.
- (ii) Olfactory lobes are small & merged in cerebrum.
- (iii) Olfactory tract is thin & long. Small diencephalon.
- (iv) Corpora striata are well developed.
- (v) Optic lobes are large & cerebellum is slightly large.
- (vi) Medulla oblongata is smaller.
- (vii) 12 pairs of cranial nerves.
- (viii) Pallium is thick and well developed.

SUN 11

IMPORTANT FOR TODAY

- (ix) Parietal eye is developed in some reptiles.



Dorsal View (Uromastix)

Ventral View