

THU 1

BRAIN IN FISHES

IMPORTANT FOR TODAY

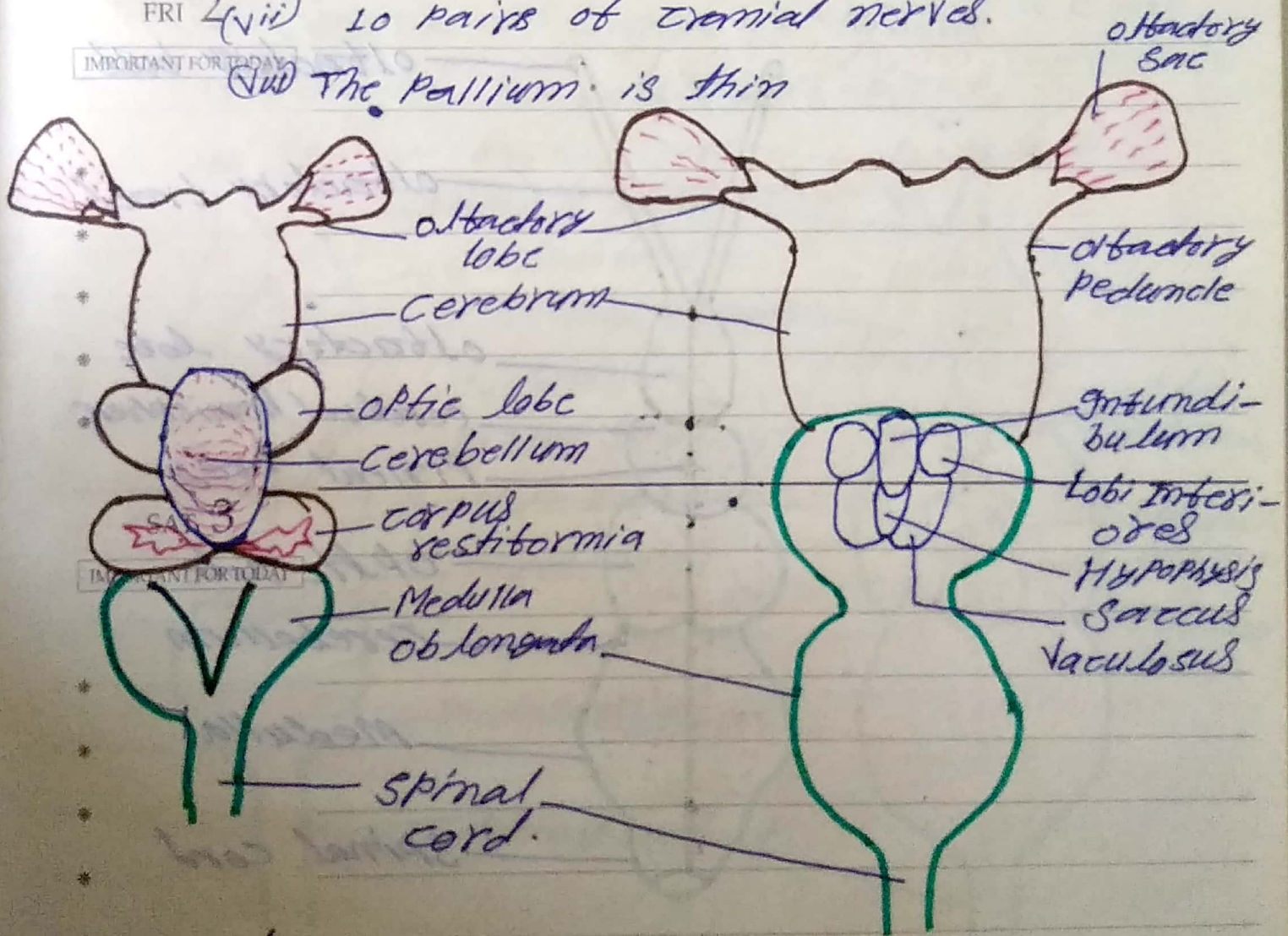
LA] IN ELASMOBRANCHES (ex. Dog fish)

- (i) ~~ex~~ cerebrum - undivided
- (ii) olfactory lobe - large & bilobed
- (iii) olfactory peduncles - long
- (iv) Lobi interiores & Sacus vasculosus - Present
- (v) cerebrum is well developed.
- (vi) Medulla oblongata - ear shaped lobes

FRI 2 (vii) 10 pairs of cranial nerves.

IMPORTANT FOR TODAY

(viii) The pallium is thin



IMPORTANT FOR TODAY

Dorsal View

Ventral View

JUN 2003

S	M	T	W	T	F	S	S	M	T	W	T	F	S
1	2	3	4	5	6	7	8	9	10	11	12	13	14
15	16	17	18	19	20	21	22	23	24	25	26	27	28
29	30												

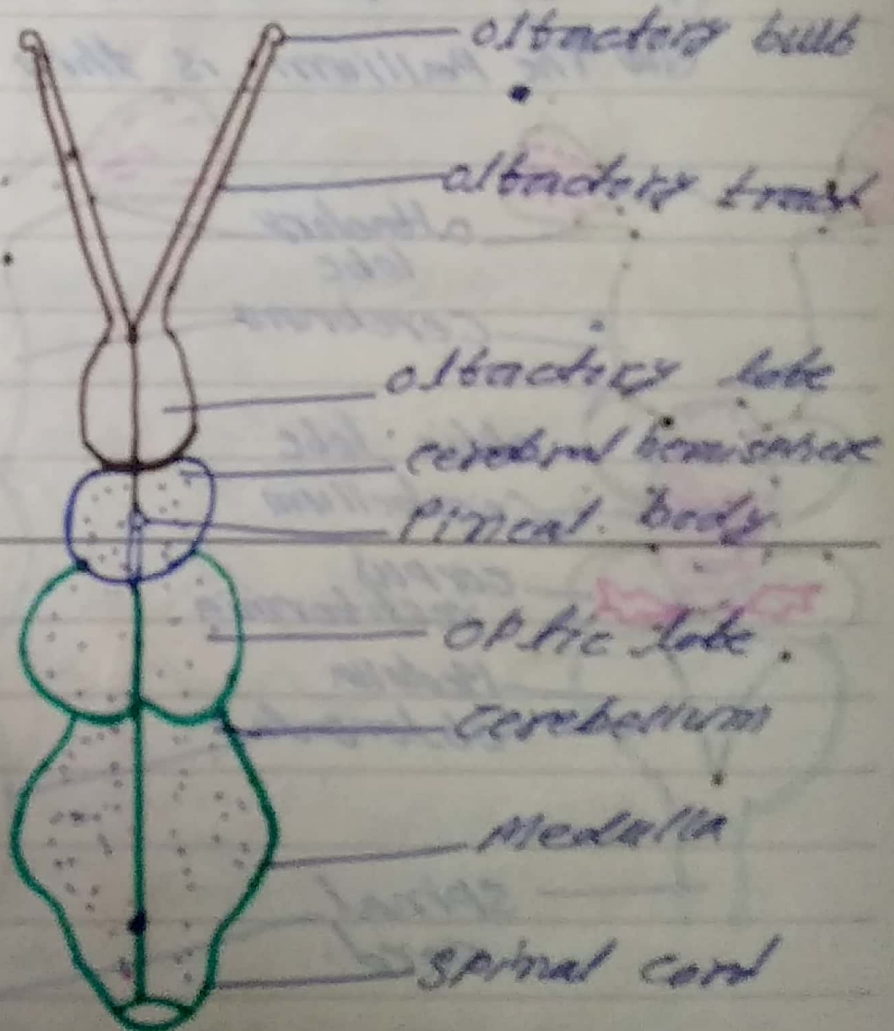
SUN 4 (B) IN TELEOST (bony-fishes)

IMPORTANT FOR TODAY

- (i) Cerebrum is small & undivided.
- (ii) Olfactory lobes are small.
- (iii) Olfactory peduncles are present.
- (iv) Diencephalon is small & poorly developed.
- (v) Presence of pineal body & optic lobes.
- (vi) Cerebellum is well developed.
- (vii) Medulla is well developed.

MON 5

IMPORTANT FOR TODAY



TUE 6

IMPORTANT FOR TODAY

Fig. Bony Fish - Dorsal View

APR 2003

S	M	T	W	T	F	S	S	M	T	W	T	F	S	S	M	T	W	T	F	S
	1	2	3	4	5	6	7	8	9	10	11	12	13	14	15	16	17	18	19	
20	21	22	23	24	25	26	27	28	29	30										