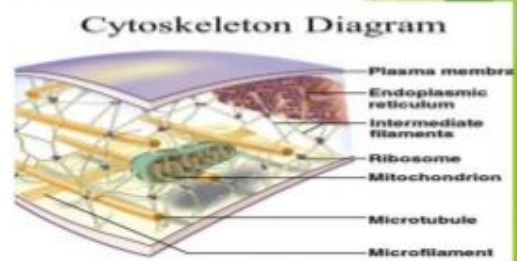
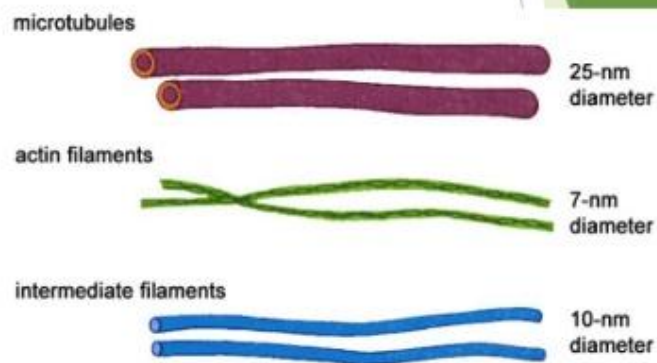


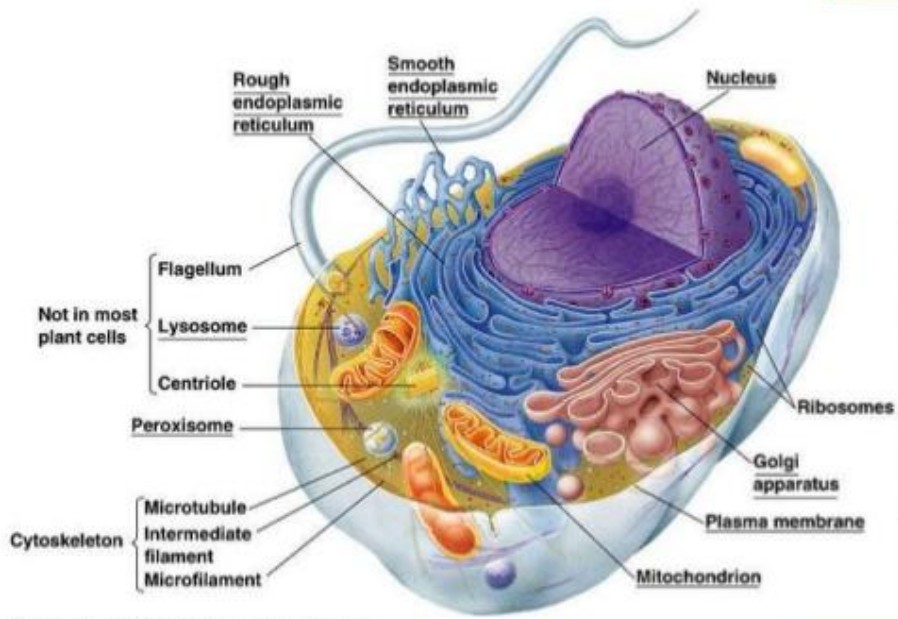
## INTRODUCTION

- ▶ What is **CYTOSKELETON** ?
- It is a complex network of filaments and microtubules which forms a structural framework known as Cytoskeleton.
- Skeleton and muscle of the cell.
- Also responsible for segregation of chromosomes into two daughter cell at cell division.



- The cytoskeleton is built on a framework of three types of protein filaments.
- ❖ Intermediate filaments
- ❖ Microtubules
- ❖ Actin filaments





Copyright © 2009 Pearson Education, Inc., publishing as Benjamin Cummings.