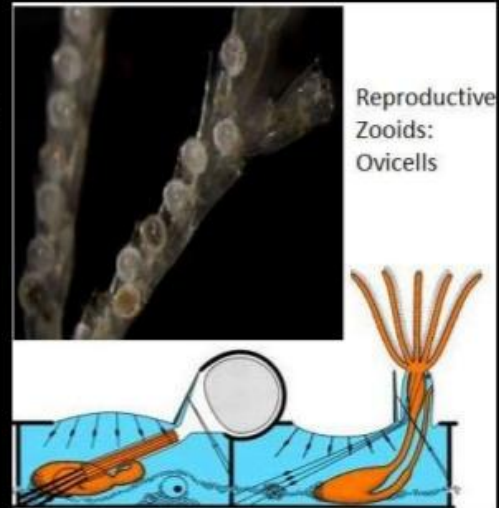


## Animals that are Moss like Phylum Bryozoa

### Bryozoan Polymorphism

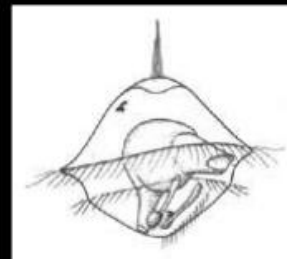
Different zooids can perform different functions

- Autozooids for feeding and reproduction



## Animals that are Moss like Phylum Bryozoa

- Zooid is a single sex
- Colonies are hermaphroditic
- Ovicells are brooding chambers in the colony
- Free swimming larva emerge from ovicell, settle onto a suitable substrate and metamorph
- First zooid in a colony = ancestrula
- Forms new colonies by asexual budding

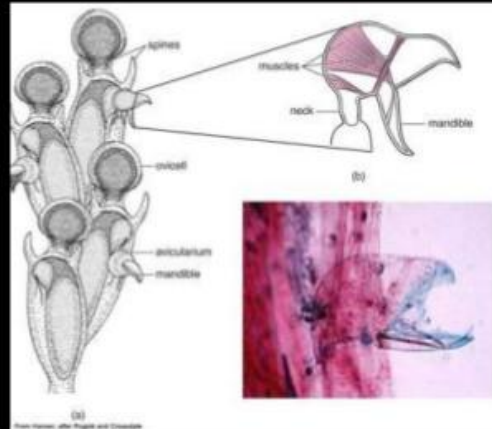


## Animals that are Moss like Phylum Bryozoa

### Byrozoan Polymorphism

Different zooids can perform different functions

- Heterozoids for cleaning and protection



## Animals that are Clam like Phylum Brachiopoda

Common Name

- Lampshells

Common Characteristics

- Bivalved shell
- Lophophore
- Peduncular stalk for attachment



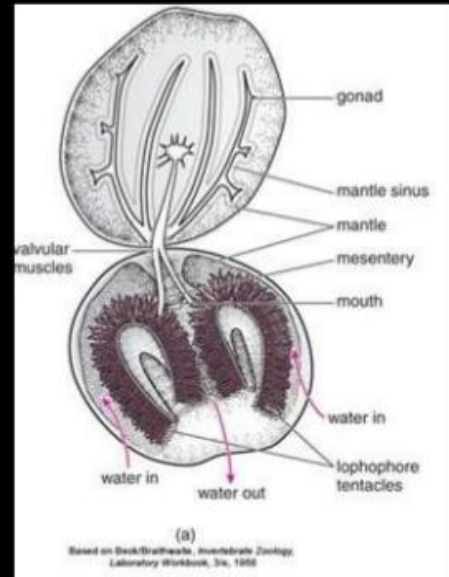
## Animals that are Clam like Phylum Brachiopoda

They resemble clams

- Calcareous bivalved shell (but not the same size or shape)
- Adductor muscle
- Mantle

They resemble bryozoans

- Lophophore
- No special organ for gas exchange



## Animals that are Clam like Phylum Brachiopoda

