

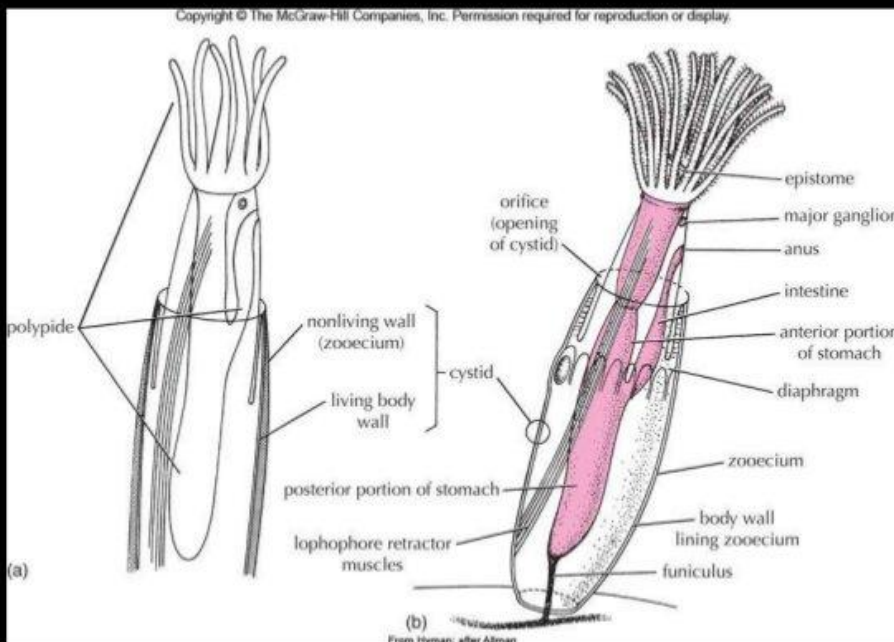
Animals that are Moss like Phylum Bryozoa

Common characteristics

- Food capturing organ called a lophophore
- Colonial – asexually produced and interconnected
- Exoskeleton called a zooecium excreted by individual zooids
- No specialized organs for excretion, gas exchange or circulation



Animals that are Moss like Phylum Bryozoa



Animals that are Moss like Phylum Bryozoa

Cnidarian Hydroid Polyp



Bryozoan Zooid



Animals that are Moss like Phylum Bryozoa

- Many different growth forms with the zooecium made from calcium, chiton or protein
- Erect and branching
 - e.g. *Bugula sp*
 - The spiral bryozoan



© James Watanabe