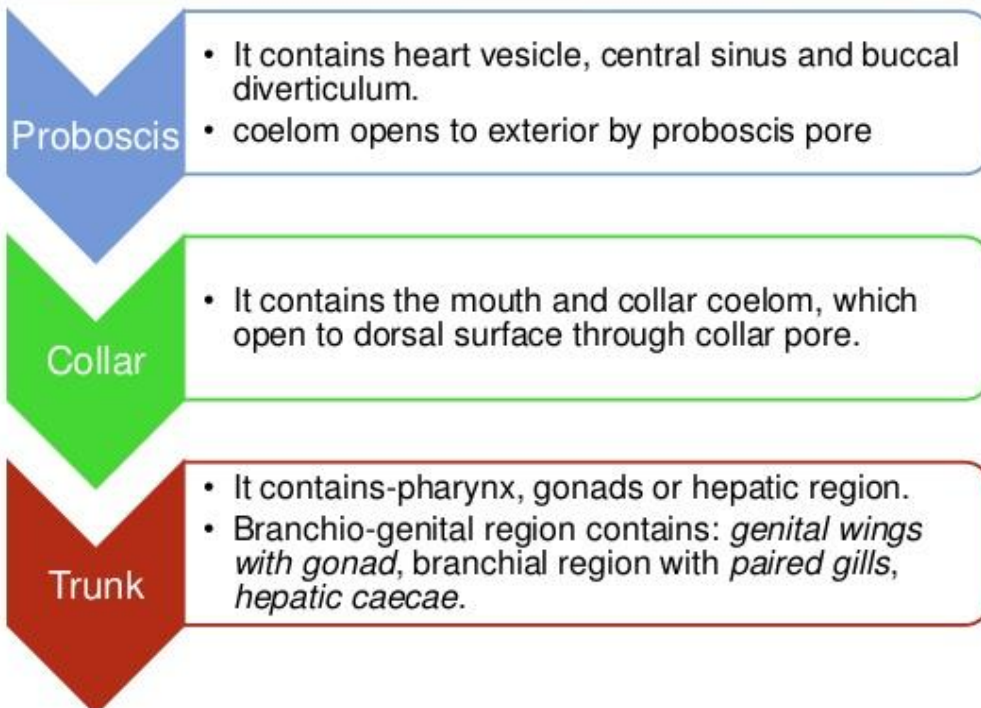


## BALANOGLOSSUS: DISTINCT FEATURES

- It measures 10cm to 2.5metres, depending on species.
- Worm-like body divisible into three regions.
  - > **Anterior proboscis** which is conical.
  - > **Middle collar** which is funnel like
  - > **Posterior trunk** which is cylindrical and further divided into:  
Branchiogenital region, hepatic region & abdominal region.
- Notochord represented by small buccal diverticulum.
- Development includes tornoria larva

7

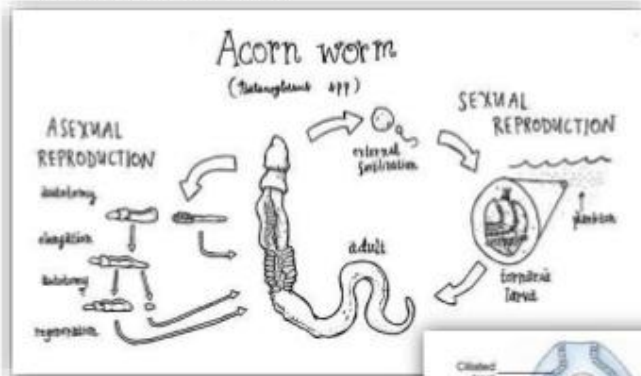
## LOCALIZATION OF INTERNAL ORGANS



8

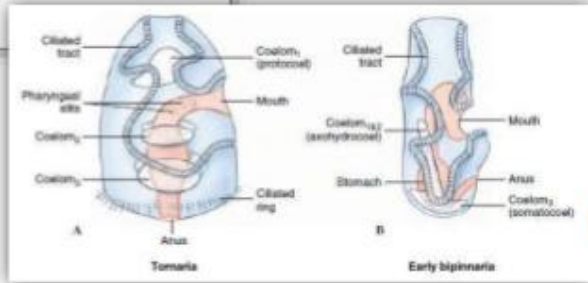
## REPRODUCTION

- Fertilization is external and development includes tornoria larva.

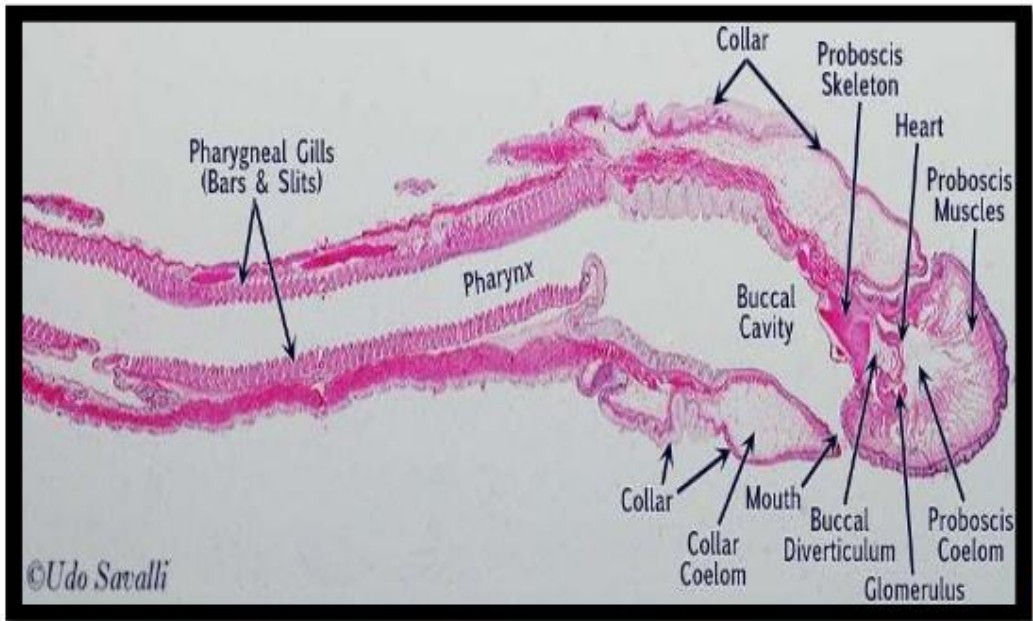


Reproduction in *Balanoglossus*

Tornoria Larva resembles echinoderm larva



## INTERNAL MORPHOLOGY



## AFFINITIES OF HEMICHORDATES

### With Annelids

- Worm-like and segmented body.

### With Echinoderms

- Blastopore, enterocoelus coelom and ciliated bands in the respective larvae.

### With Chordates

- Presence of pharyngeal gill slits, nerve cord and so-called notochord.

12

**THANK YOU**

13