

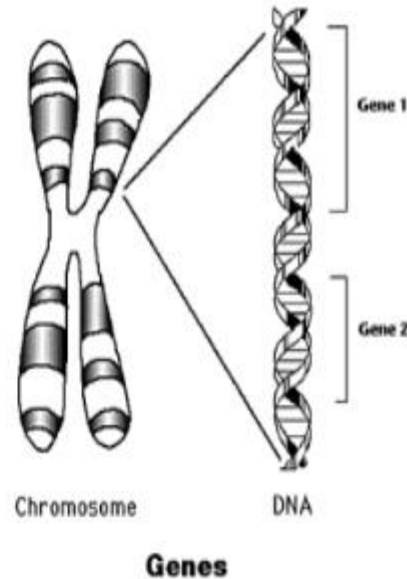
BASIC GENETICS

Anita kr

LS College

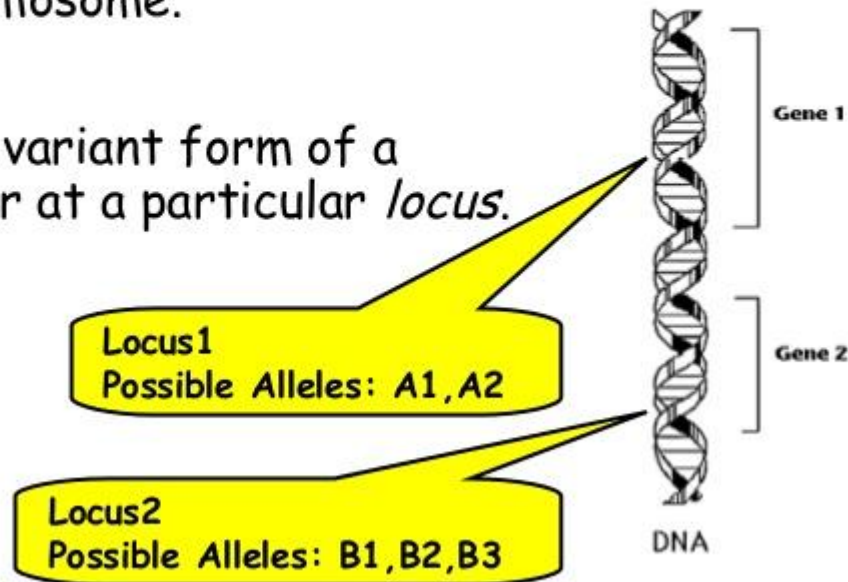
Genetic Information

- **Gene** - basic unit of genetic information. Genes determine the inherited characters.
- **Genome** - the collection of genetic information.
- **Chromosomes** - storage units of *genes*.
- **DNA** - is a nucleic acid that contains the genetic instructions specifying the biological development of all cellular forms of life.



Chromosome Logical Structure

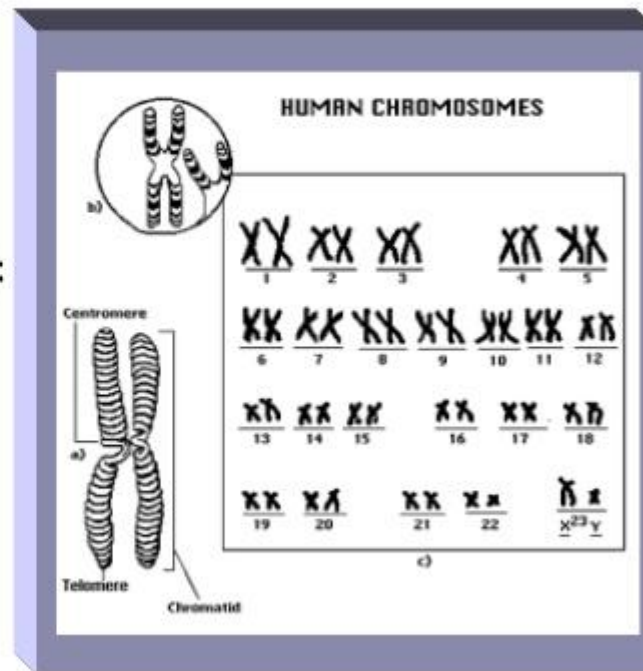
- **Locus** - location of a *gene/marker* on the chromosome.
- **Allele** - one variant form of a *gene/marker* at a particular *locus*.



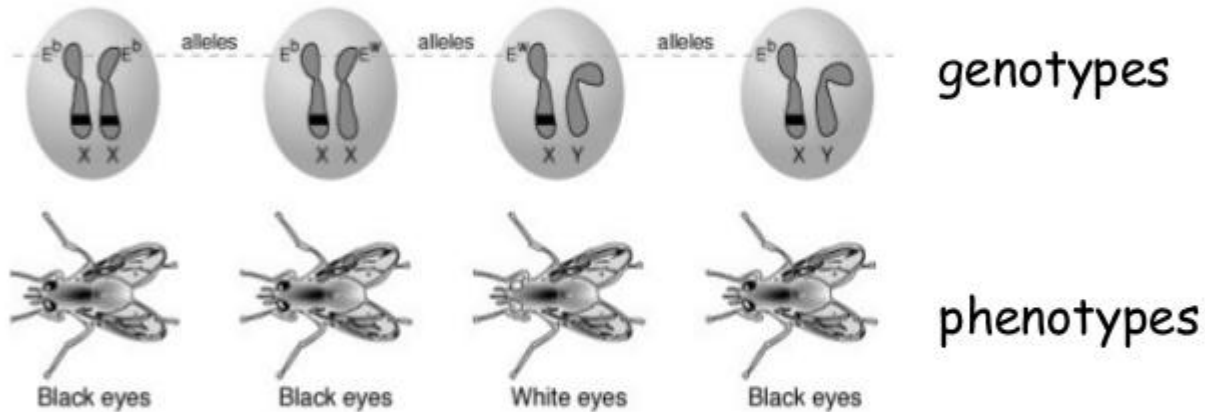
Human Genome

Most human cells contain 46 chromosomes:

- 2 **sex chromosomes** (X,Y):
XY - in males.
XX - in females.
- 22 pairs of chromosomes named **autosomes**.



Genotypes \longleftrightarrow Phenotypes (example)



- E^b - *dominant* allele.
- E^w - *recessive* allele.

One Locus Inheritance

