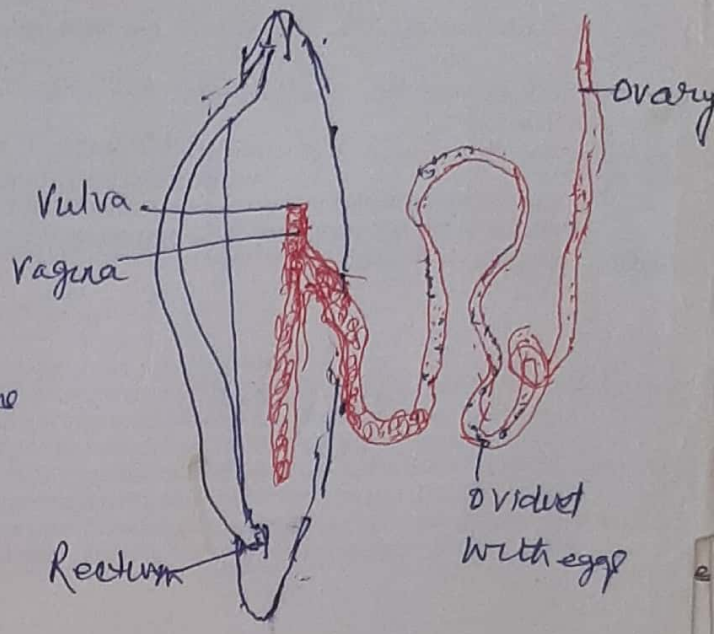


Male reproductive organ of Ascaris



Female reproductive organ of Ascaris

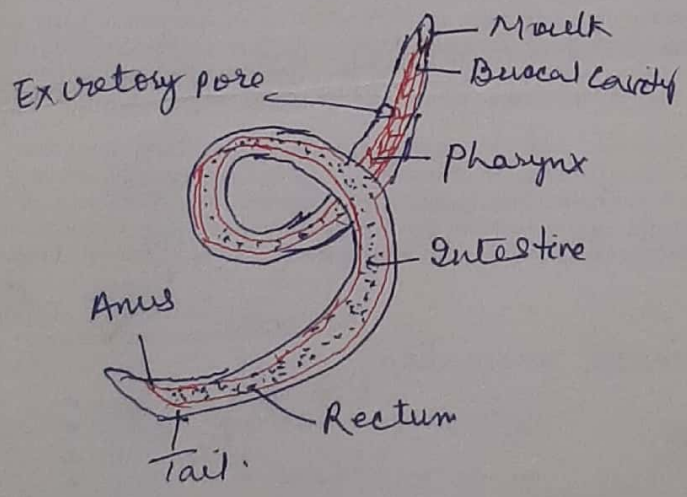


Fig - Rhabditiform larva of Ascaris.

From the liver it enter the heart via hepatic vein and post caval vein.

From the heart it enter the lungs throo pulmonary arteries. In the lungs it enters the alveoli where it lives for some days and grows.

From the alveoli of lungs it passes throo the bronchus into the trachea and then the throat. It then moves into the oesophagus. Finally it reaches the small intestine and grow into adult.

Moulting:

Moulting is the shedding of outer cuticle. Rhabditiform larva moults four times before it becomes the adult. when it is inside the egg, it moults for the first time. In the alveolus of the lungs, it moults twice. The fourth moulting occur in the intestine. This moults converts the larva into an adult.

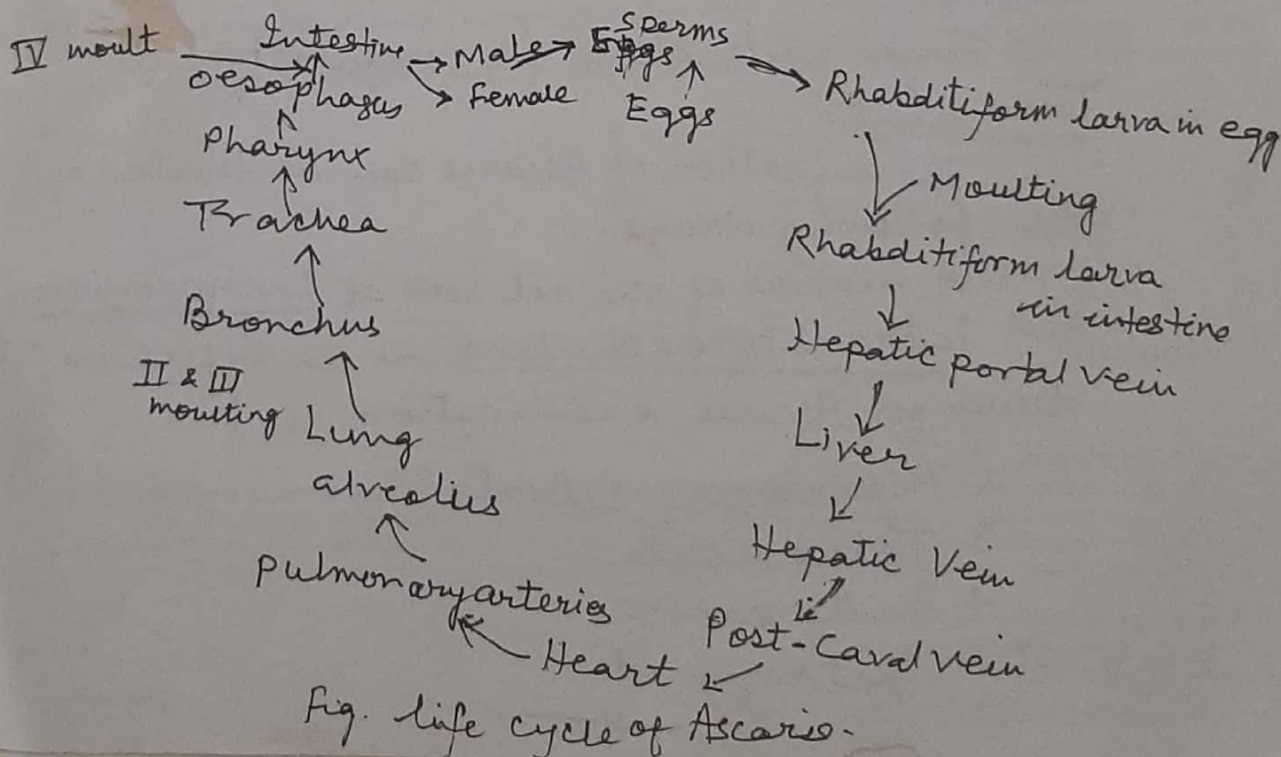


Fig. life cycle of Ascaris.