

# Acoustico-Lateralis System

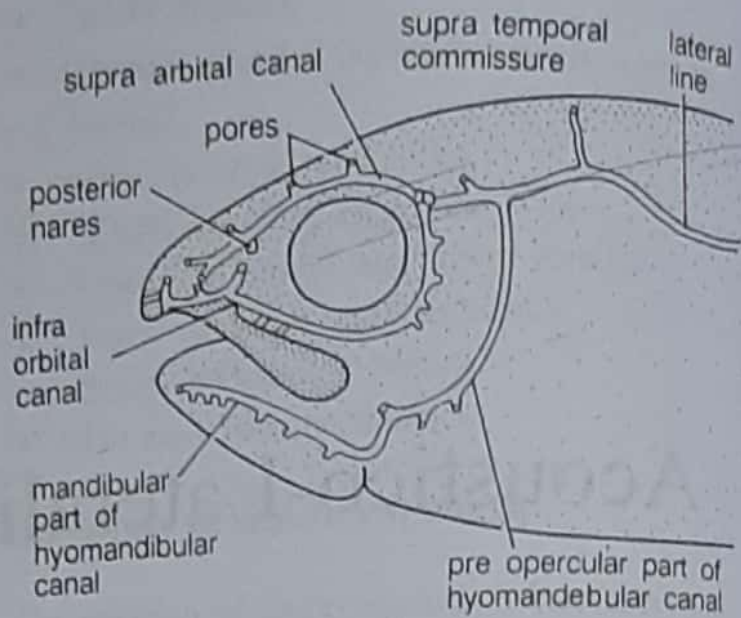


Fig. 1. Typical arrangement of lateral line canal in a teleost.

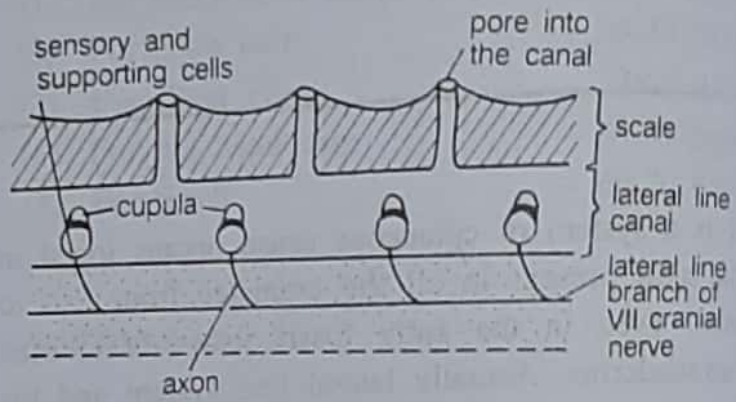


Fig. 2. A part of lateral line canal magnified to indicate neuromast organs in grooves.

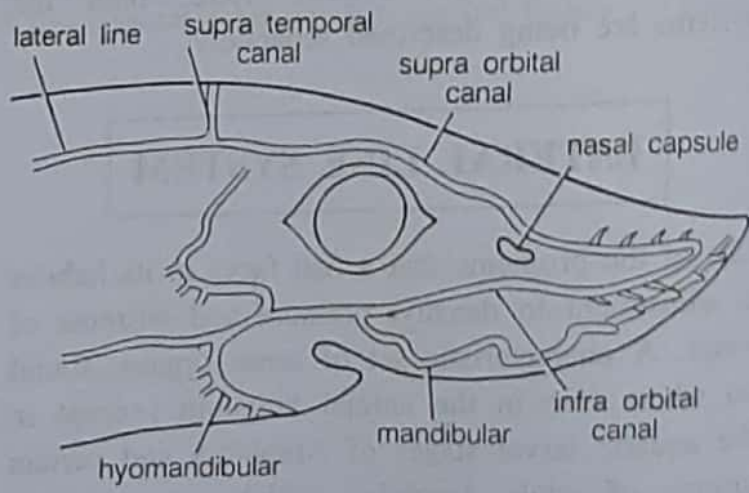


Fig. 3. Arrangement of lateral line canal in a teleost.

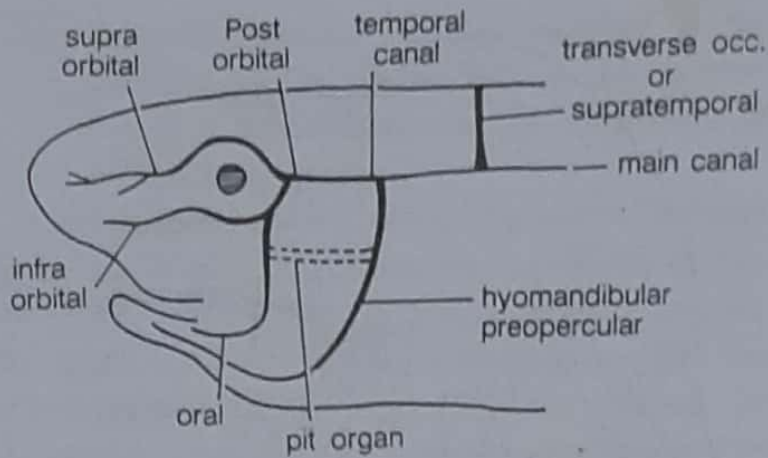


Fig. 4. Lateral line canal in *Amia*.

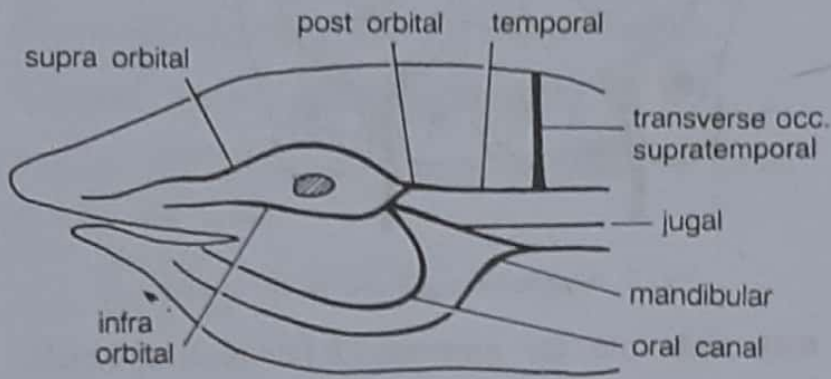


Fig. 5. Lateral line canal in Dipnoi.

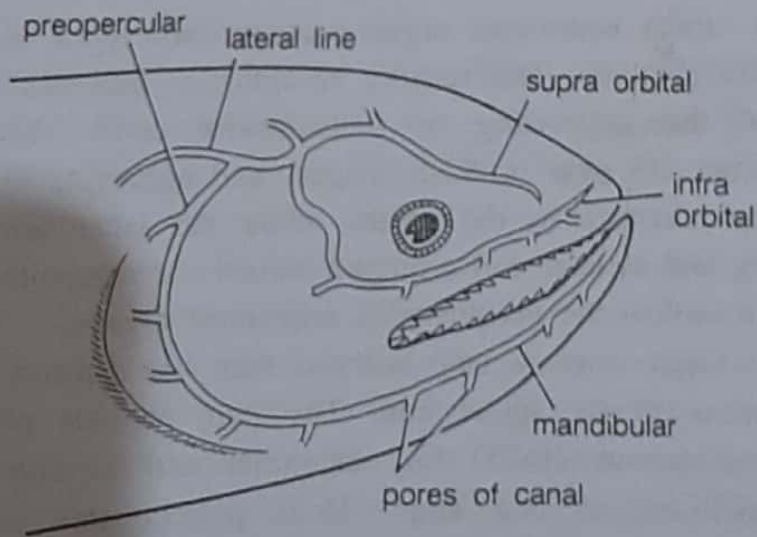


Fig. 6. Cephalic canals of *Wallago attu*.

face in *Cobitis*. In several families a lot of lines also occur

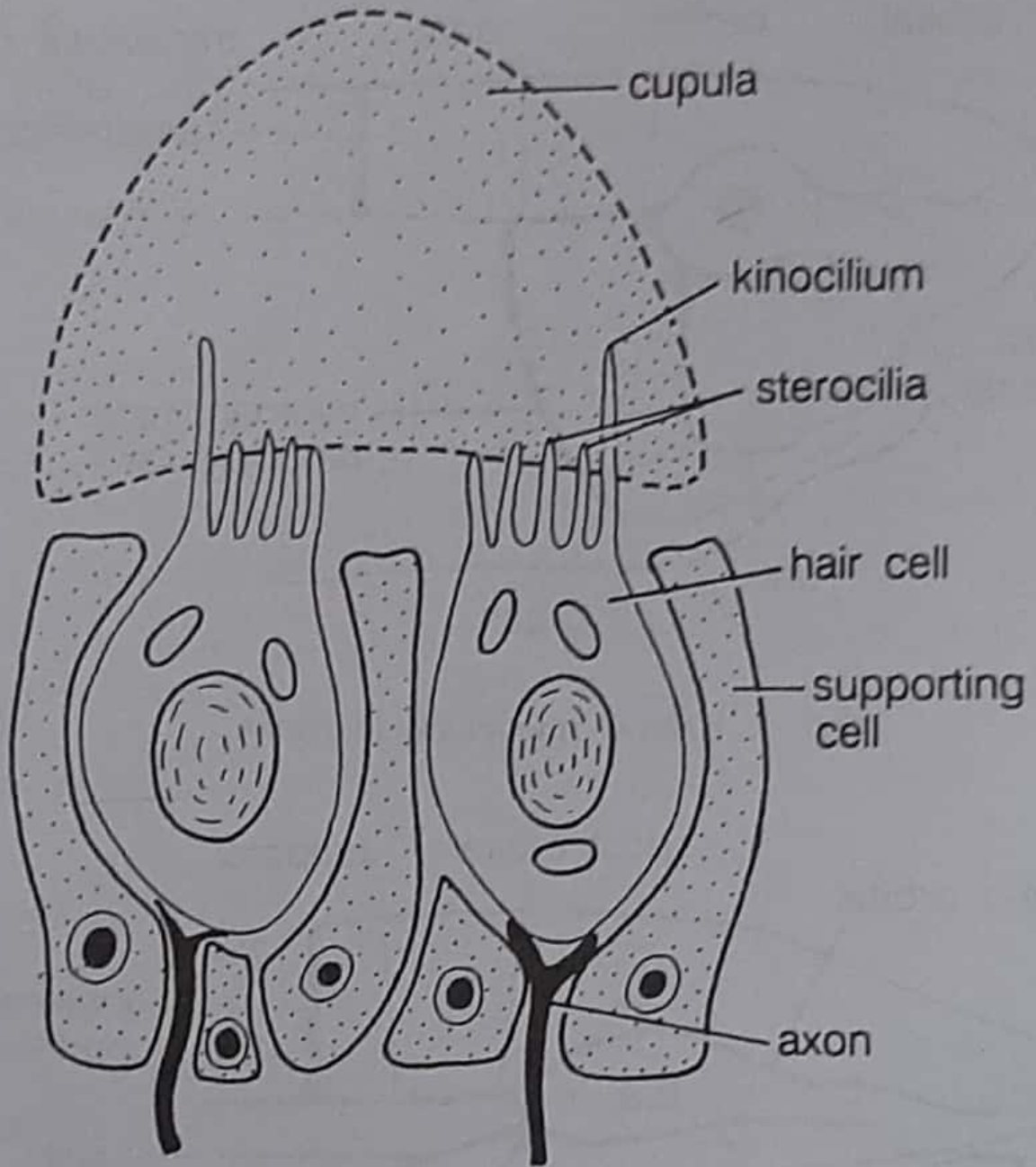


Fig. 7. Neuromast organ and its innervation.

may sink into the grooves of lateral li